



Metal that works

Strength • Support • Integrity

Integrated Modular Drawer

metalwareshelving.com

Table of Contents

Features.....	2
Specifications	3
High-Density Shelving with Integrated Modular Drawers.....	4
Dividers, Separators & Drawer Heights	5
Assembling Metalware’s Integrated Modular Drawers	6
Understanding Metalware’s Integrated Modular Drawers	7
Available Adaptor Heights.....	8
Drawer Configurations – 18 x 36.....	9
Drawer Configurations – 18 x 48.....	16
Drawer Configurations – 24 x 36.....	23
Drawer Configurations – 24 x 48.....	30
Optimize Your Space and Grow Vertically With a Multi-Level Shelving Solution ..	37

/ Features

1. *Compatible

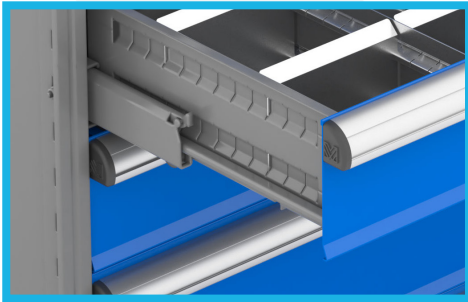
Fully compatible and adjustable with all Interlok and E-Series Widespan units.

*NB: For accurate drawer clearances, please contact Metalware

2. *Deep Compartment Drawer Design

Avoid spillage, drawer sides and dividers are flush with the top of the drawer-front.

*NB: An 8" drawer front has a full 7" usable storage depth.



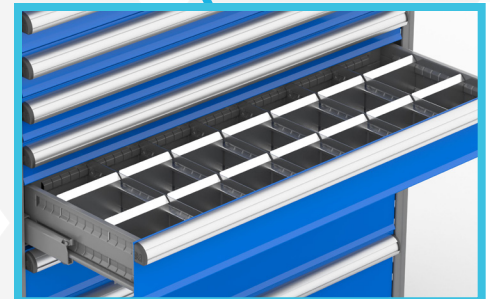
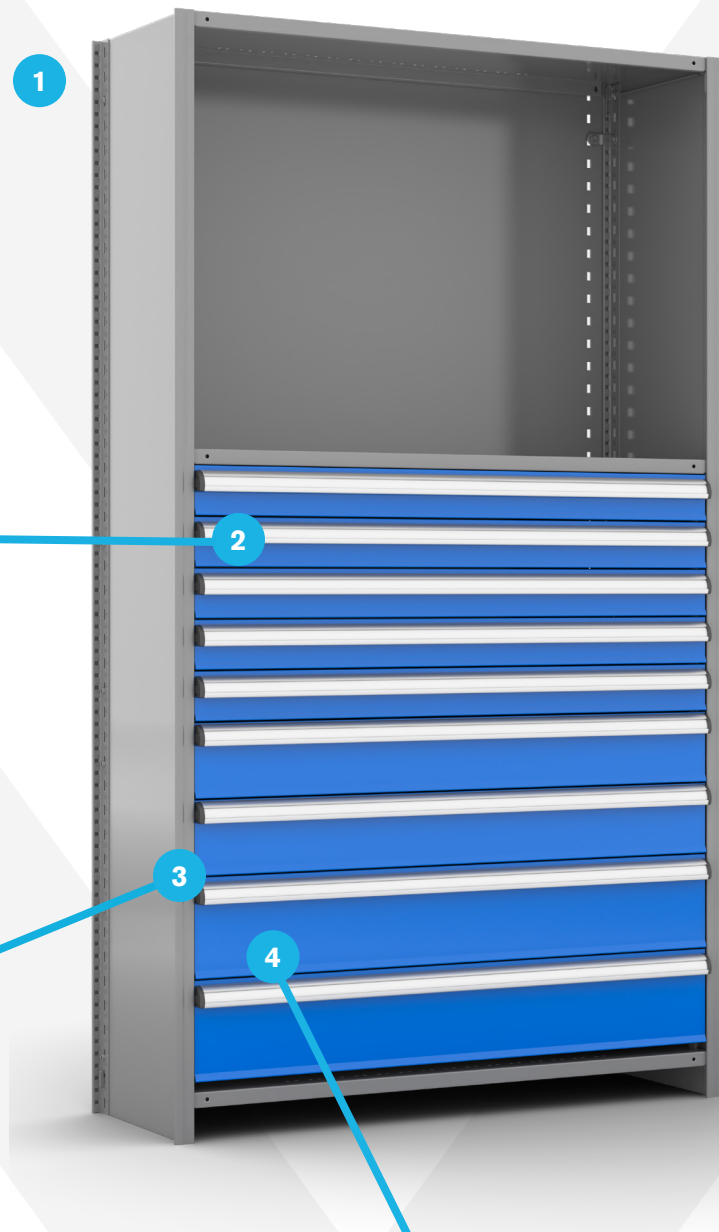
3. Ergonomic Design

Non-slip ergonomic handle design for easy grip and secure hold.



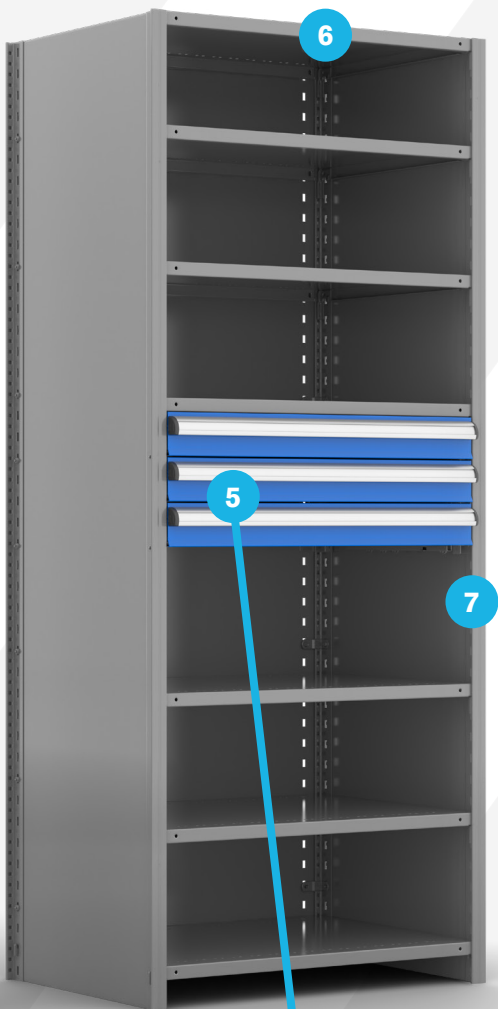
Metalware is proud to introduce our newest product: the Integrated Modular Drawer. Saving more space while maximizing storage capacity and ease of access has never been easier. This drawer system answers a wide range of storage needs while occupying a smaller footprint. Made of superior 18ga steel and built to last, Metalware's latest offering combines strength and durability for years to come, with a design that is as unique as your needs.

This heavy-duty welded drawer can easily hold up to a total of 450 lbs and can easily be integrated with all current Interlok and E-Series Widespan shelving units, maximizing your existing storage space. The drawer unit is framed within the shelving system using adaptor brackets for added security and unparalleled strength. The boxed drawer-sides and Delrin Roller rail-system increases coverage and support of your goods, while the full-length ergonomic handle provides easy grip for effortless pull-push maneuverability. Maximize each drawer space with 20ga steel drop-in dividers offered in a variety of configurations. The powder-coated finish adds to the streamlined and functional design.



4. Drop-in Dividers

Each drawer includes drop-in dividers offered in a variety of configurations to compartmentalize and maximize your storage needs.



/ Specifications

Model name	Integrated Modular Drawer
Category	Drawer for Interlok and E-Series Widespan shelving systems
Depth (inches)	18" or 24"
Width (inches)	36" W or 48" W
Drawer height (inches)	3" - 4" - 5" - 6" - 8" - 10" - 12"
Drawer capacity (each)	450 lbs
Colors available	Light grey, red, blue, black, white
Custom colors available	Yes

5. Full Extension

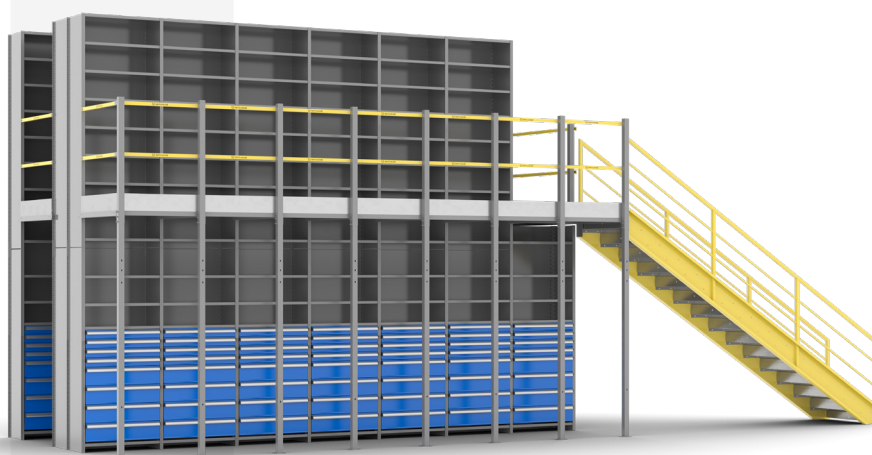
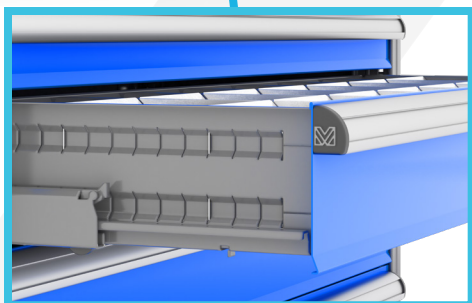
Complete extension with sliding pull-out and push back for easy viewing and accessibility / self-close with 450 lbs capacity per drawer.

6. Superior Construction

Exceptional quality, designed to last and built to the highest standards of Metalware construction.

7. Guarantee

Each Metalware drawer is backed by a 5 (five) year limited warranty against manufacturer's defects. Drawer slides carry a limited lifetime warranty directly with the slide manufacturer.

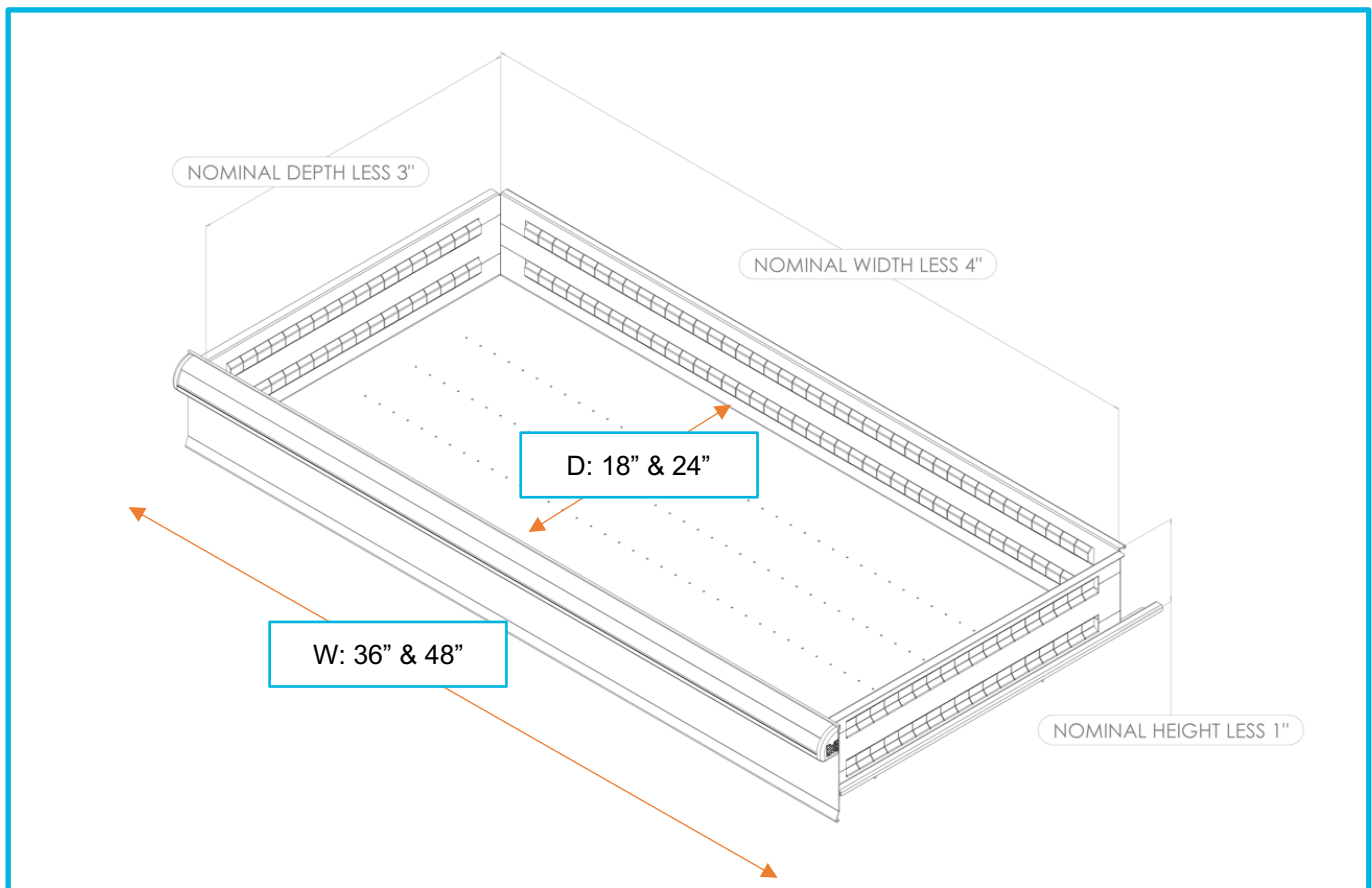


Get in Touch

Metalware is here to work with you to bring to life any project imaginable. Get us started on your next project by sending us an email at info@metalware.ca or calling us at 1-514-937-9533.

/ High-Density Shelving Units With Integrated Modular Drawers

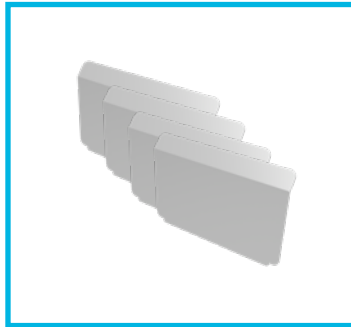
Our heavy-duty modular drawers are the most flexible on the market today. Arrange and rearrange them easily within Metalware shelving units as needed to organize better and keep operating costs to a minimum.



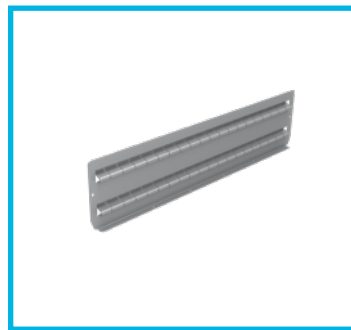
2 available drawer **Depths: 18"** and **24"**

2 available drawer **Widths: 36"** and **48"**

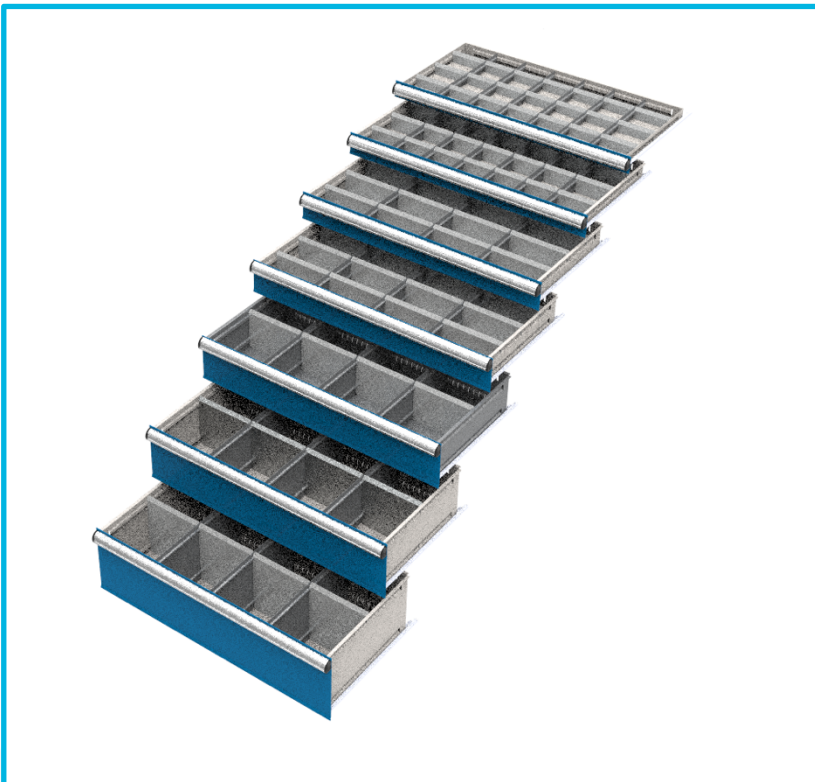
/ Dividers, Separators & Drawer Heights



20 GA drop-in **dividers** match the drawer heights and come in a variety of dimensions. Additional drop-in dividers are available. Easily adjustable at every inch to create the perfect storage compartment.



Separators span the full depth of the drawer and match the drawer height. They are screwed in during warehouse assembly to create vertical subdivisions. Additional separators are available. Easily adjustable at every inch to customize your spacing



7 available drawer front **Heights:**

3"	2"
4"	3"
5"	4"
6"	5"
8"	7"
10"	9"
12"	11"
Nominal	Useable

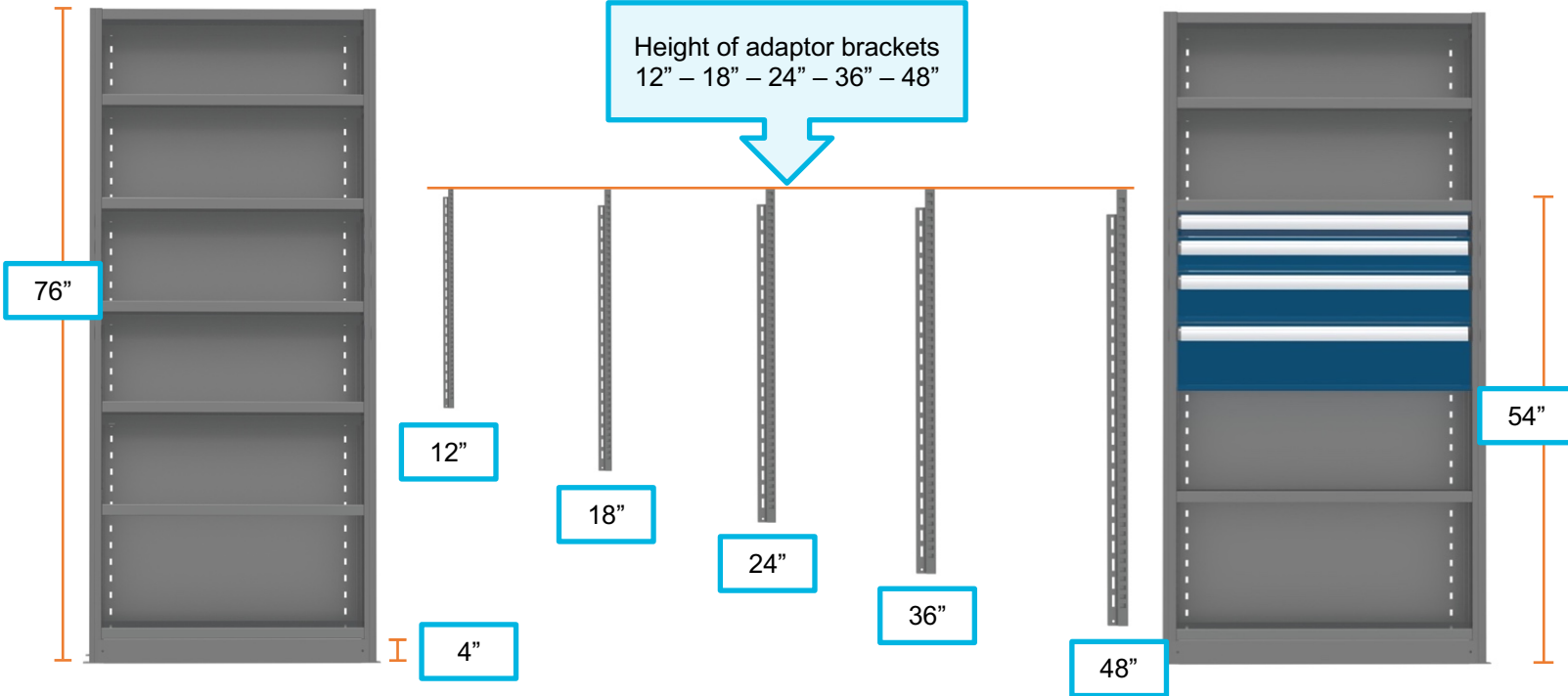
/ Assembling Metalware's Integrated Modular Drawers

Bolt each adaptor bracket to the corresponding post at each corner inside the unit.

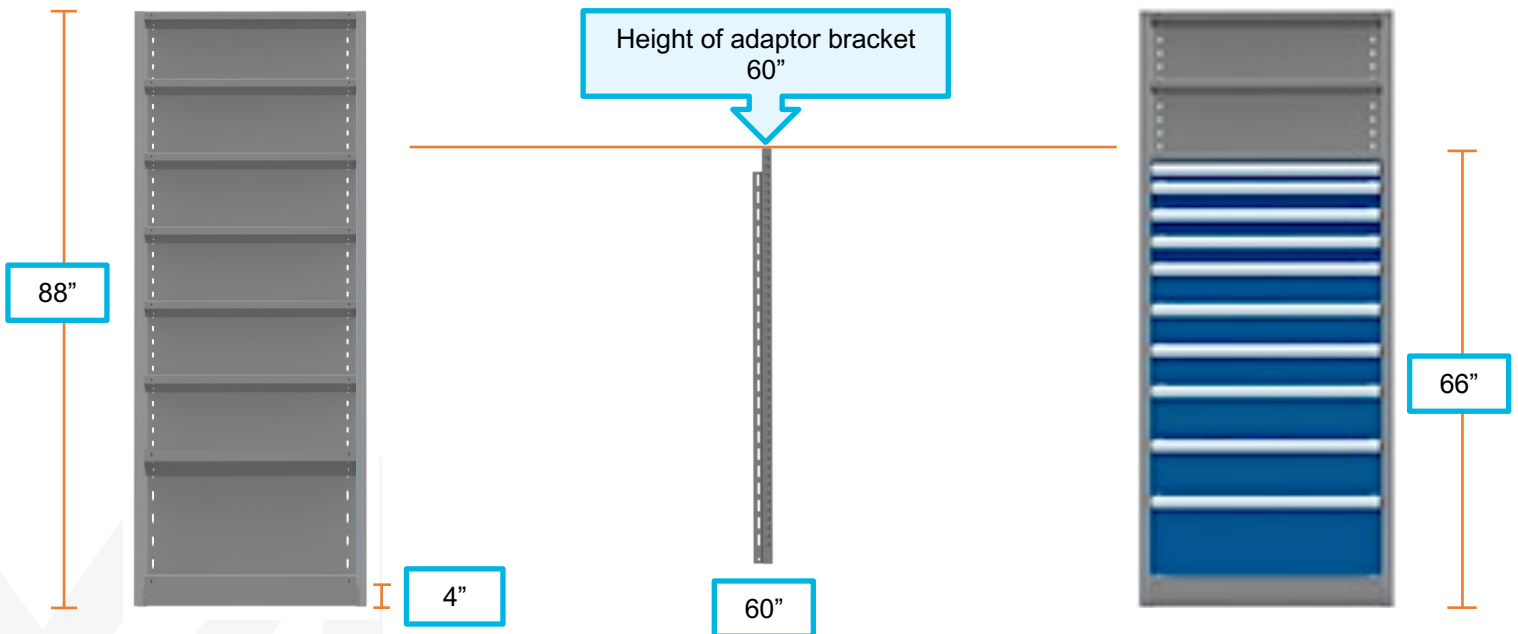
Attach all drawer rails and slides to the adaptor brackets. Close off the unit with the back and end panels.

Insert each drawer by gently sliding it into the corresponding rail.

Height of adaptor brackets
12" – 18" – 24" – 36" – 48"



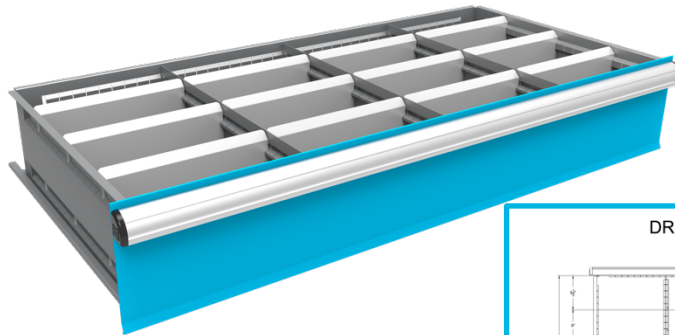
Height of adaptor bracket
60"



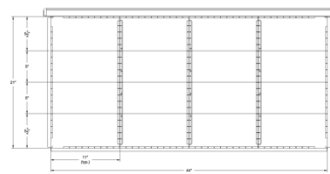
/ Understanding Metalware's Integrated Modular Drawers

Example of Drawer Product Code: DR82448L-16-0312S (seen below)

DR82448L-16-0312S



DR82448_-16-0312_



DR	8	2448	L	16	03	12	S
-----------	----------	-------------	----------	-----------	-----------	-----------	----------

Product Type: Drawer

Drawer Front Height: 8"

Drawer configuration: 24" D x 48" W

Drawer Box Color: L (Light Gray)

of Compartments: 16

of Separators: 3

of Dividers: 12

Drawer front color: S (Classic Blue)

DRXXXXX_-00-0000_
DRXXXXX_-01-0000_



***Note about the following drawer codes:**

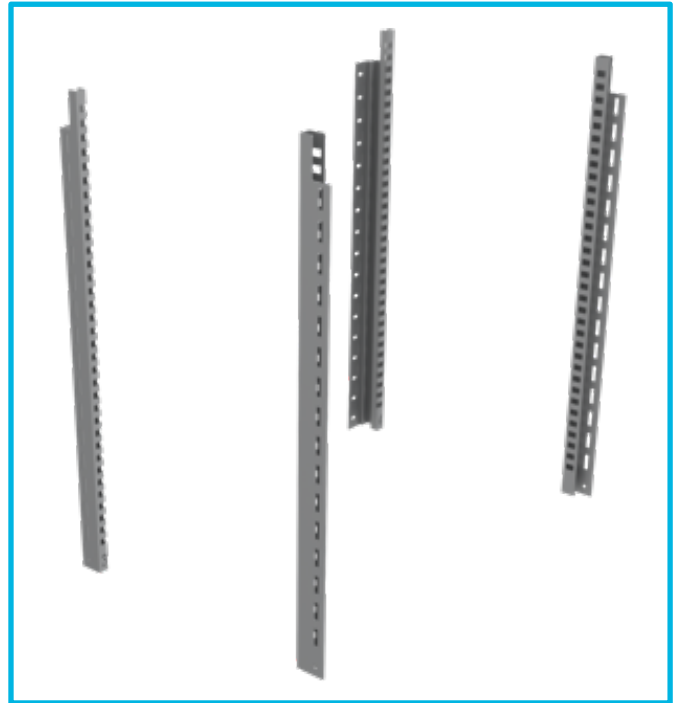
DRXXXXX_-00-0000_ = empty drawer

DRXXXXX_-01-0000_ = empty drawer with mat

/ Available Adaptor Heights

Pick your adaptor size and corresponding product code:

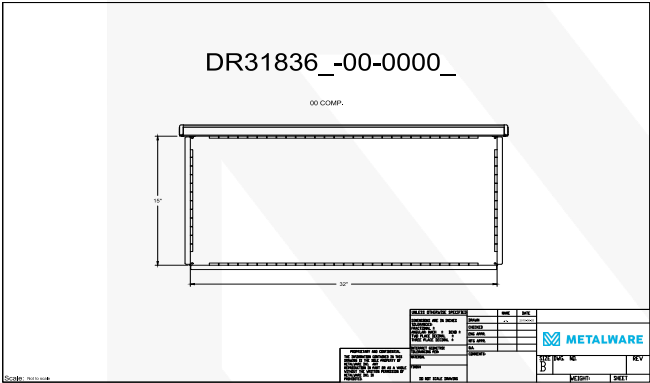
12" H	INDA12_
18" H	INDA18_
24" H	INDA24_
36" H	INDA36_
48" H	INDA48_
60" H	INDA60_



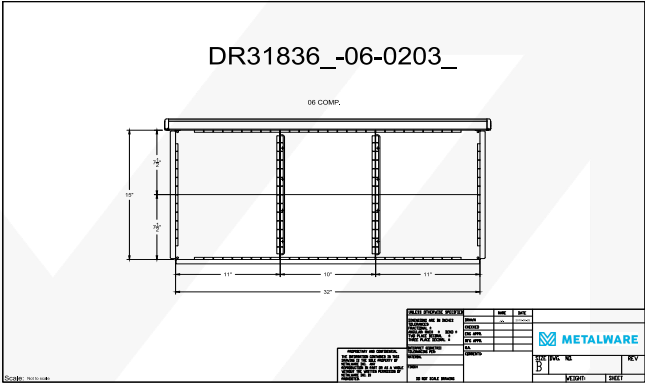
/ Important

- The shelving unit must be assembled and anchored to the floor using footplates prior to inserting the drawers
- All hardware mentioned is required and should be included with your order
- Metalware provides $\frac{3}{8}$ " x 3" anchors for each post to be anchored onto a structurally sound cement floor
- *It is recommended that two people carry out the assembly

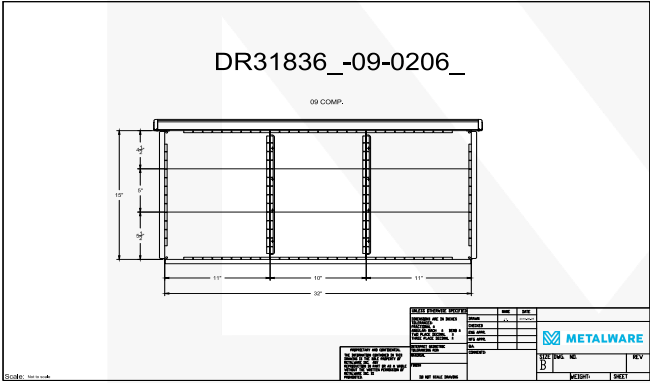
3"



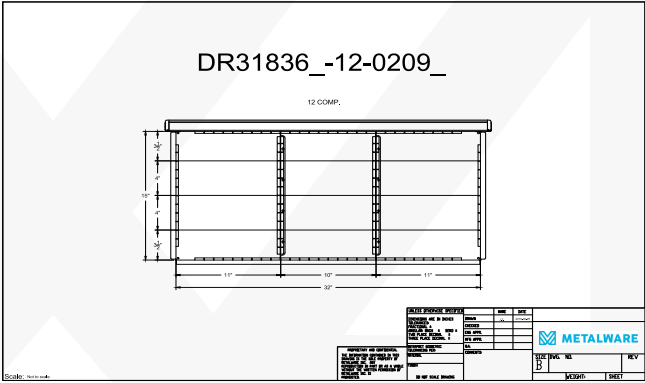
Code	DR31836_-00-0000_	DR31836_-01-0000_ Empty with a mat (not shown)	
Nominal H	3"	Useable H	2"
Nominal D	18"	Useable D	15"
Nominal W	36"	Useable W	32"
# dividers	0	Useable D (comp)	15"
# separators	0	Useable W (comp)	32"
# comps	0		



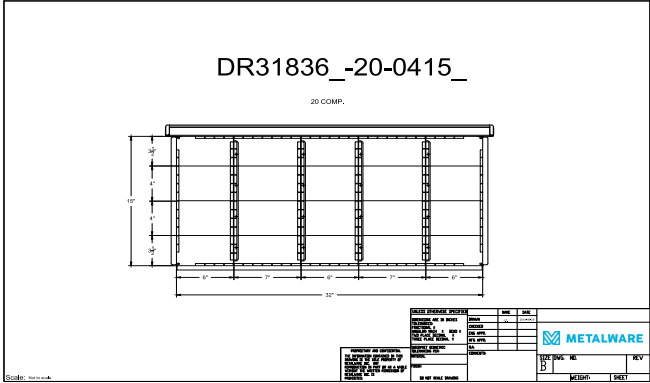
Code	DR31836_-06-0203		
Nominal H	3"	Useable H	2"
Nominal D	18"	Useable D	15"
Nominal W	36"	Useable W	32"
# dividers	3	Useable D (comp)	7.5"
# separators	2	Useable W (comp)	11", 10", 11"
# comps	6		



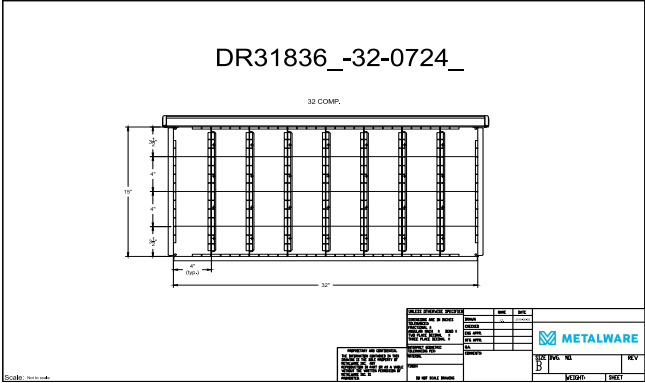
Code	DR31836_-09-0206_		
Nominal H	3"	Useable H	2"
Nominal D	18"	Useable D	15"
Nominal W	36"	Useable W	32"
# dividers	6	Useable D (comp)	4.5", 5", 5.5"
# separators	2	Useable W (comp)	11", 10", 11"
# comps	9		



Code	DR31836_-12-0209		
Nominal H	3"	Useable H	2"
Nominal D	18"	Useable D	15"
Nominal W	36"	Useable W	32"
# dividers	9	Useable D (comp)	3.5", 4", 4", 3.5"
# separators	2	Useable W (comp)	11", 10", 11"
# comps	12		



Code	DR31836_-20-0415_		
Nominal H	3"	Useable H	2"
Nominal D	18"	Useable D	15"
Nominal W	36"	Useable W	32"
# dividers	15	Useable D (comp)	3.5", 4", 4", 3.5"
# separators	4	Useable W (comp)	6", 7", 6", 7", 6"
# comps	20		

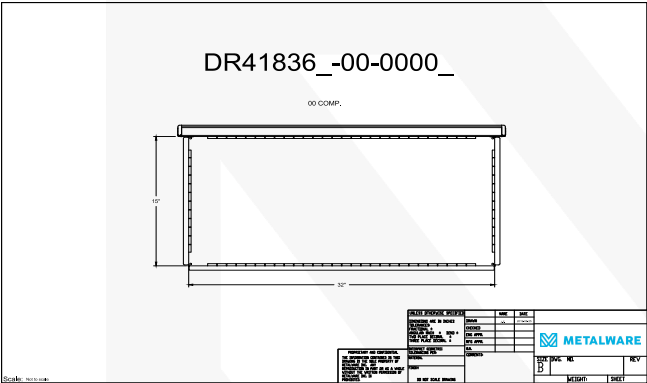


Code	DR31836_-32-0724_		
Nominal H	3"	Useable H	2"
Nominal D	18"	Useable D	15"
Nominal W	36"	Useable W	32"
# dividers	24	Useable D (comp)	3.5", 4", 4", 3.5"
# separators	7	Useable W (comp)	4"
# comps	32		

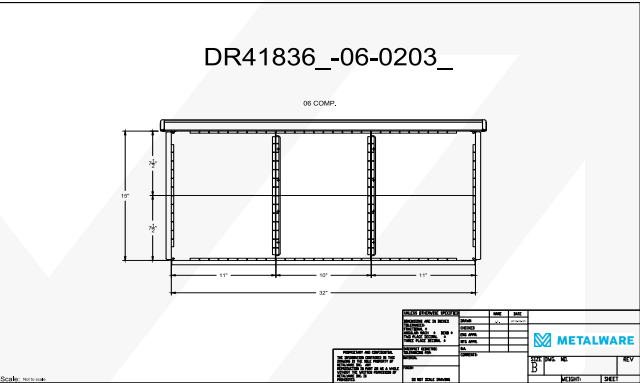
Note : Images show evenly distributed drawer dividers. Dividers can be dropped into place every inch. Additional dividers are available based on compartment width and drawer height. Drawer separators are screwed into place during assembly but are adjustable every inch.



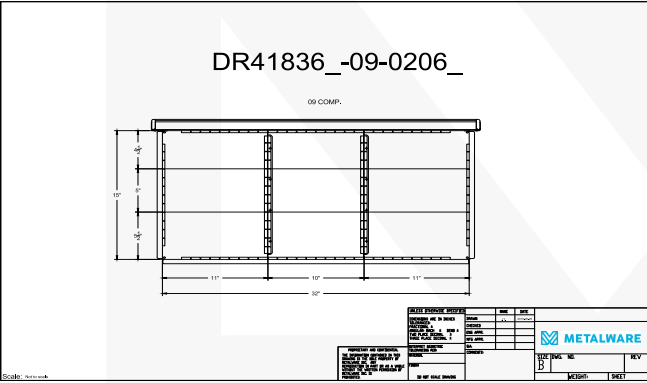
4"



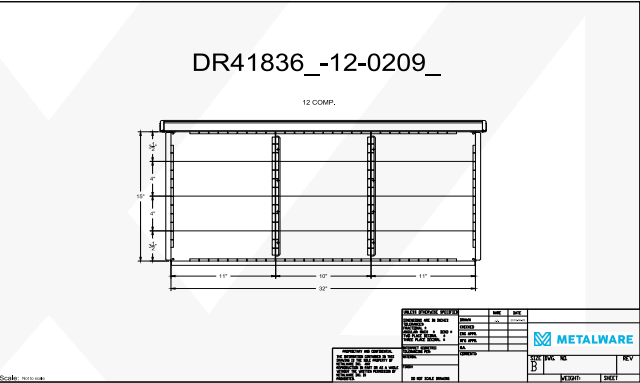
Code	DR41836_-00-0000_	DR41836_-01-0000_ Empty with a mat (not shown)
Nominal H	4"	Useable H 3"
Nominal D	18"	Useable D 15"
Nominal W	36"	Useable W 32"
# dividers	0	Useable D (comp) 15"
# separators	0	Useable W (comp) 32"
# comps	0	



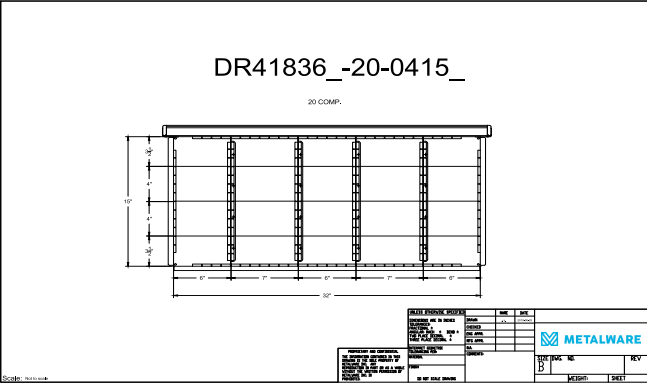
Code	DR41836_-06-0203		
Nominal H	4"	Useable H	3"
Nominal D	18"	Useable D	15"
Nominal W	36"	Useable W	32"
# dividers	3	Useable D (comp)	7.5"
# separators	2	Useable W (comp)	11", 10", 11"
# comps	6		



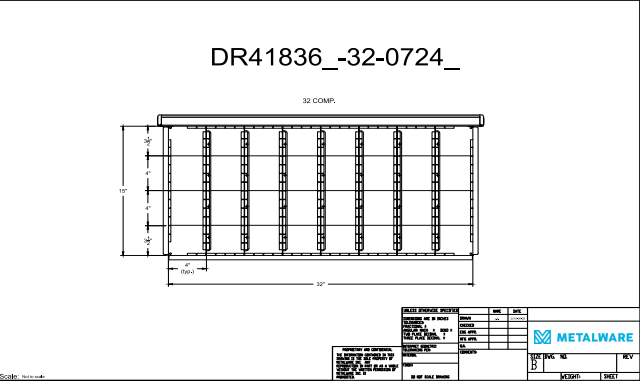
Code	DR41836_-09-0206_		
Nominal H	4"	Useable H	3"
Nominal D	18"	Useable D	15"
Nominal W	36"	Useable W	32"
# dividers	6	Useable D (comp)	4.5", 5", 5.5"
# separators	2	Useable W (comp)	11", 10", 11"
# comps	9		



Code	DR41836_-12-0209		
Nominal H	4"	Useable H	3"
Nominal D	18"	Useable D	15"
Nominal W	36"	Useable W	32"
# dividers	9	Useable D (comp)	3.5", 4", 4", 3.5"
# separators	2	Useable W (comp)	11", 10", 11"
# comps	12		



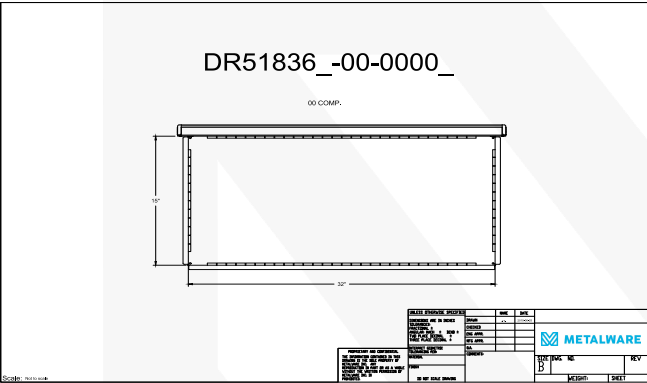
Code	DR41836_-20-0415_		
Nominal H	4"	Useable H	3"
Nominal D	18"	Useable D	15"
Nominal W	36"	Useable W	32"
# dividers	15	Useable D (comp)	3.5", 4", 4", 3.5"
# separators	4	Useable W (comp)	6", 7", 6", 7", 6"
# comps	20		



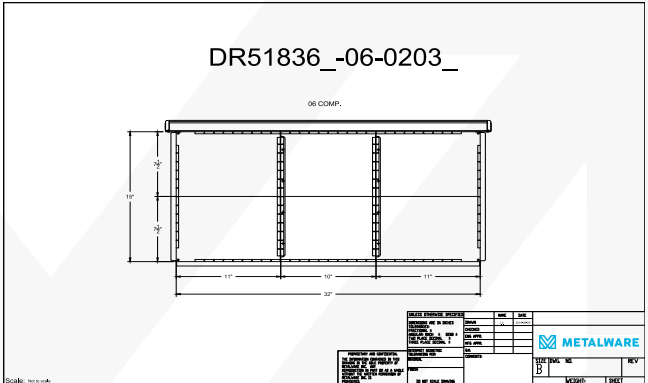
Code	DR41836_-32-0724		
Nominal H	4"	Useable H	3"
Nominal D	18"	Useable D	15"
Nominal W	36"	Useable W	32"
# dividers	24	Useable D (comp)	3.5", 4", 4", 3.5"
# separators	7	Useable W (comp)	4"
# comps	32		

Note : Images show evenly distributed drawer dividers. Dividers can be dropped into place every inch. Additional dividers are available based on compartment width and drawer height. Drawer separators are screwed into place during assembly but are adjustable every inch.

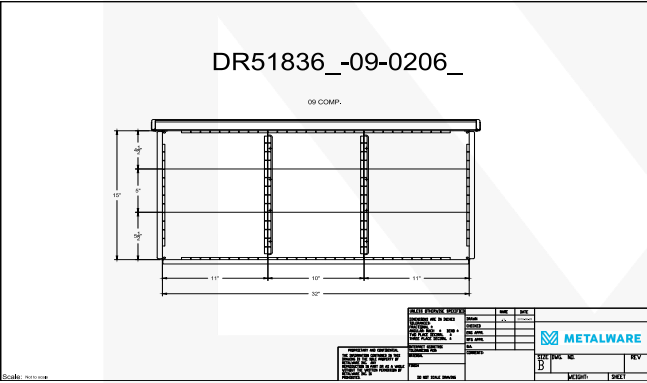
5"



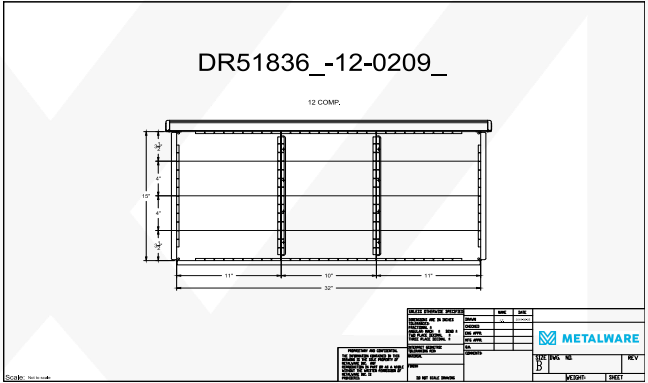
Code	DR51836_-00-0000_	DR51836_-01-0000_ Empty with a mat (not shown)	
Nominal H	5"	Actual H	4"
Nominal D	18"	Actual D	15"
Nominal W	36"	Actual W	32"
# dividers	0	Actual D comp	15"
# separators	0	Actual W comp	32"
# comps	0		



Code	DR51836_-06-0203_		
Nominal H	5"	Actual H	4"
Nominal D	18"	Actual D	15"
Nominal W	36"	Actual W	32"
# dividers	3	Actual D comp	7.5"
# separators	2	Actual W comp	11", 10", 11"
# comps	6		

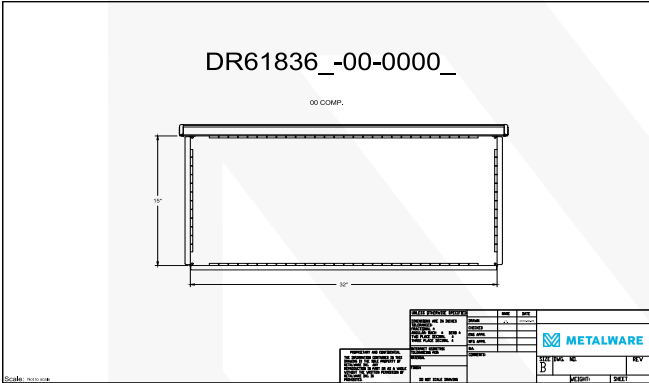


Code	DR51836_-09-0206_		
Nominal H	5"	Actual H	4"
Nominal D	18"	Actual D	15"
Nominal W	36"	Actual W	32"
# dividers	6	Actual D comp	4.5", 5", 5.5"
# separators	2	Actual W comp	11", 10", 11"
# comps	9		

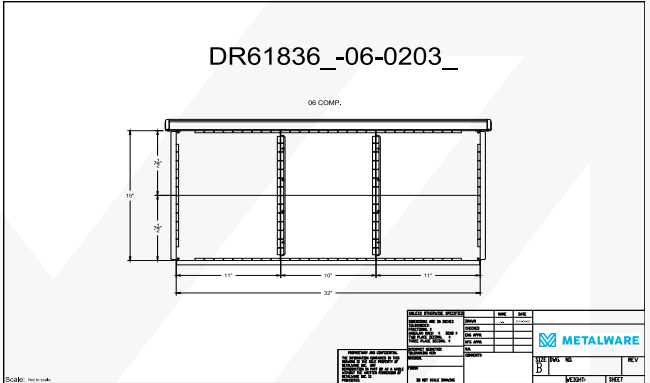


Code	DR51836_-12-0209		
Nominal H	5"	Actual H	4"
Nominal D	18"	Actual D	15"
Nominal W	36"	Actual W	32"
# dividers	9	Actual D comp	3.5", 4", 4", 3.5"
# separators	2	Actual W comp	11", 10", 11"
# comps	12		

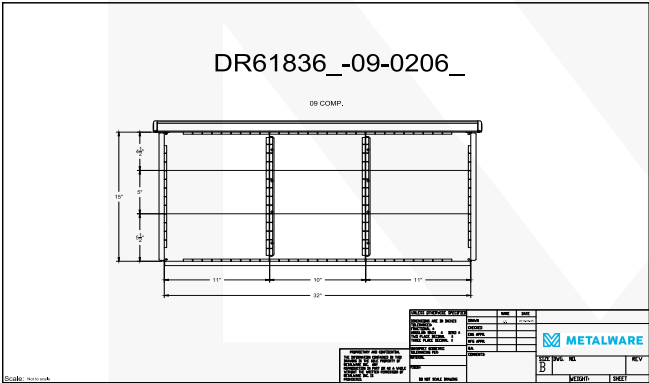
6"



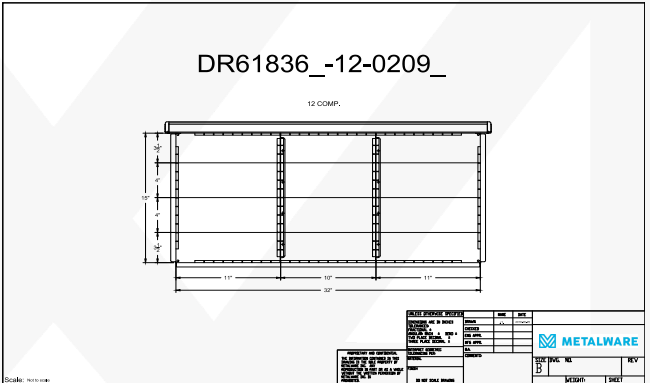
Code	DR61836_-00-0000_	DR61836_-01-0000_ Empty with a mat (not shown)	
Nominal H	6"	Useable H	5"
Nominal D	18"	Useable D	15"
Nominal W	36"	Useable W	32"
# dividers	0	Useable D (comp)	15"
# separators	0	Useable W (comp)	32"
# comps	0		



Code	DR61836_-06-0203		
Nominal H	6"	Useable H	5"
Nominal D	18"	Useable D	15"
Nominal W	36"	Useable W	32"
# dividers	3	Useable D (comp)	7.5"
# separators	2	Useable W (comp)	11", 10", 11"
# comps	6		



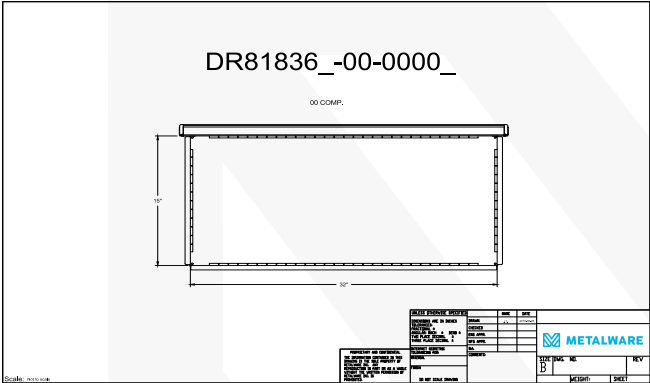
Code	DR61836_-09-0206_		
Nominal H	6"	Useable H	5"
Nominal D	18"	Useable D	15"
Nominal W	36"	Useable W	32"
# dividers	6	Useable D (comp)	4.5", 5", 5.5"
# separators	2	Useable W (comp)	11", 10", 11"
# comps	9		



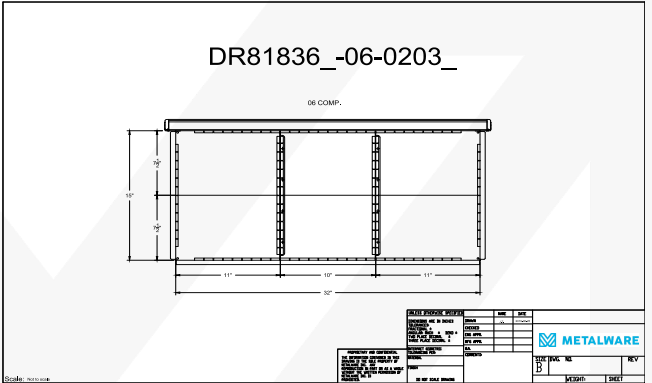
Code	DR61836_-12-0209		
Nominal H	6"	Useable H	5"
Nominal D	18"	Useable D	15"
Nominal W	36"	Useable W	32"
# dividers	9	Useable D (comp)	3.5", 4", 4", 3.5"
# separators	2	Useable W (comp)	11", 10", 11"
# comps	12		

Note : Images show evenly distributed drawer dividers. Dividers can be dropped into place every inch. Additional dividers are available based on compartment width and drawer height. Drawer separators are screwed into place during assembly but are adjustable every inch.

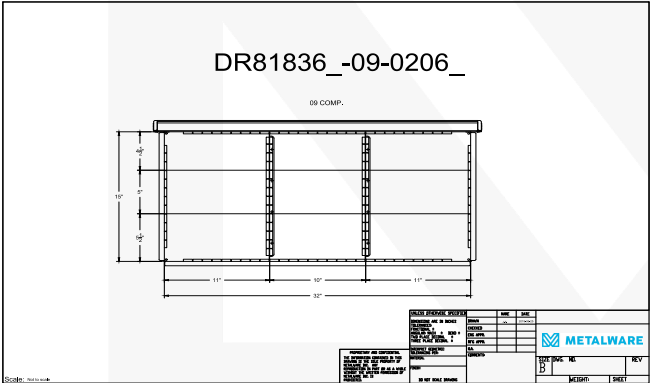
8"



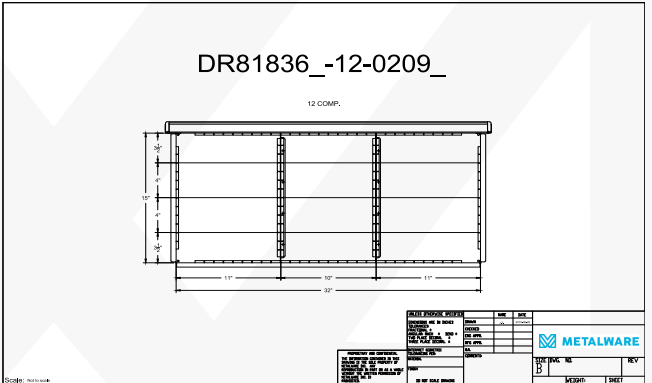
Code	DR81836_-00-0000_	DR81836_-01-0000_ Empty with a mat (not shown)	
Nominal H	8"	Useable H	7"
Nominal D	18"	Useable D	15"
Nominal W	36"	Useable W	32"
# dividers	0	Useable D (comp)	15"
# separators	0	Useable W (comp)	32"
# comps	0		



Code	DR81836_-06-0203		
Nominal H	8"	Useable H	7"
Nominal D	18"	Useable D	15"
Nominal W	36"	Useable W	32"
# dividers	3	Useable D (comp)	7.5"
# separators	2	Useable W (comp)	11", 10", 11"
# comps	6		

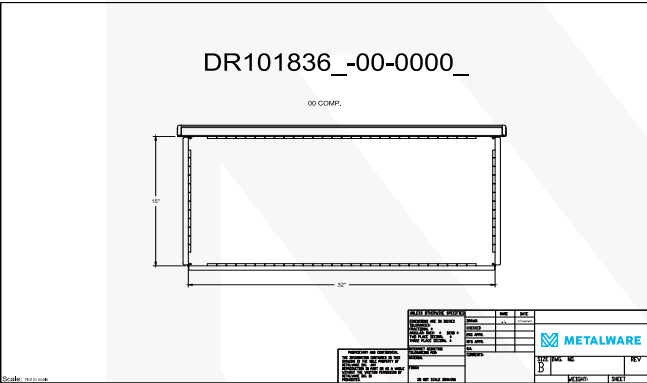


Code	DR81836_-09-0206_		
Nominal H	8"	Useable H	7"
Nominal D	18"	Useable D	15"
Nominal W	36"	Useable W	32"
# dividers	6	Useable D (comp)	4.5", 5", 5.5"
# separators	2	Useable W (comp)	11", 10", 11"
# comps	9		

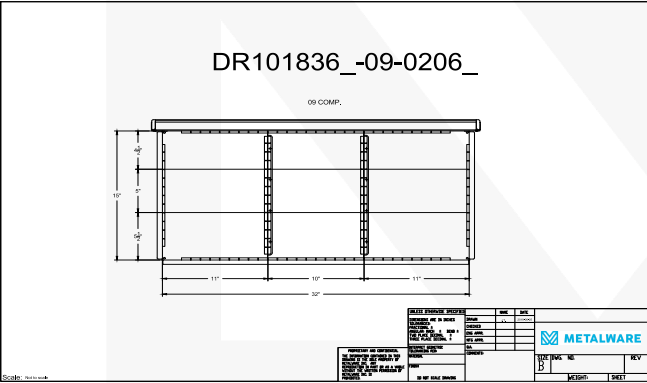


Code	DR81836_-12-0209		
Nominal H	8"	Useable H	7"
Nominal D	18"	Useable D	15"
Nominal W	36"	Useable W	32"
# dividers	9	Useable D (comp)	3.5", 4", 4", 3.5"
# separators	2	Useable W (comp)	11", 10", 11"
# comps	12		

Note : Images show evenly distributed drawer dividers. Dividers can be dropped into place every inch. Additional dividers are available based on compartment width and drawer height. Drawer separators are screwed into place during assembly but are adjustable every inch.

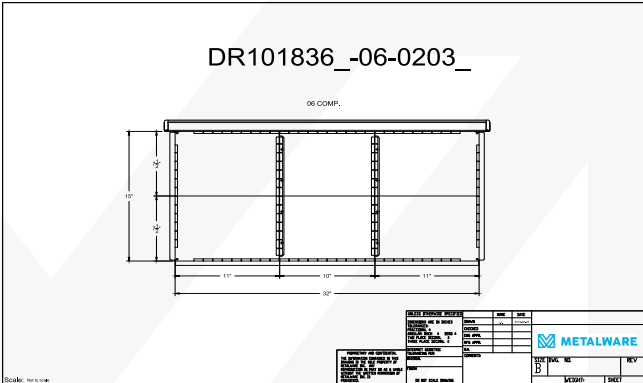


Code	DR101836_-00-0000_	DR101836_-01-0000_	Empty with a mat (not shown)
Nominal H	10"	Useable H	9"
Nominal D	18"	Useable D	15"
Nominal W	36"	Useable W	32"
# dividers	0	Useable D (comp)	15"
# separators	0	Useable W (comp)	32"
# comps	0		

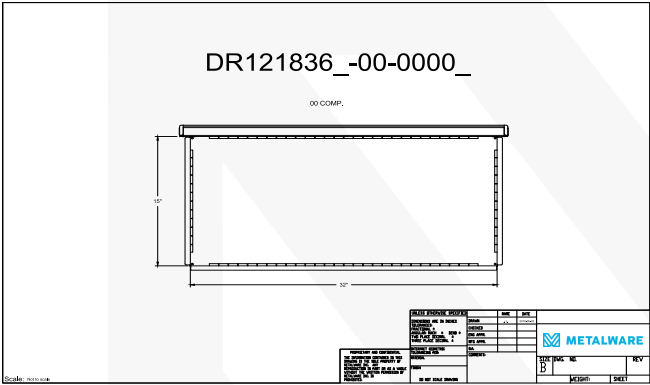


Code	DR101836_-09-0206_
Nominal H	10"
Nominal D	18"
Nominal W	36"
# dividers	6
# separators	2
# comps	9

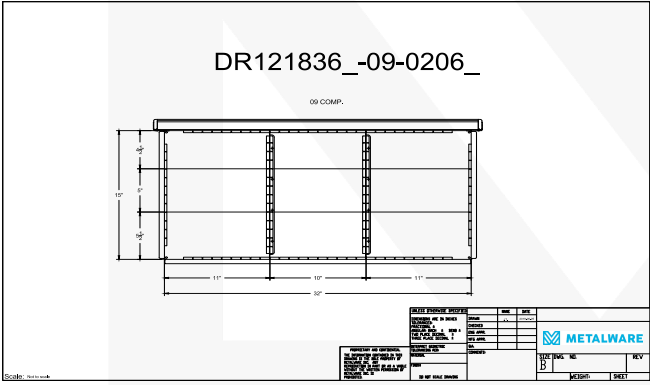
Note : Images show evenly distributed drawer dividers. Dividers can be dropped into place every inch. Additional dividers are available based on compartment width and drawer height. Drawer separators are screwed into place during assembly but are adjustable every inch.



Code	DR101836_-06-0203_
Nominal H	10"
Nominal D	18"
Nominal W	36"
# dividers	3
# separators	2
# comps	6

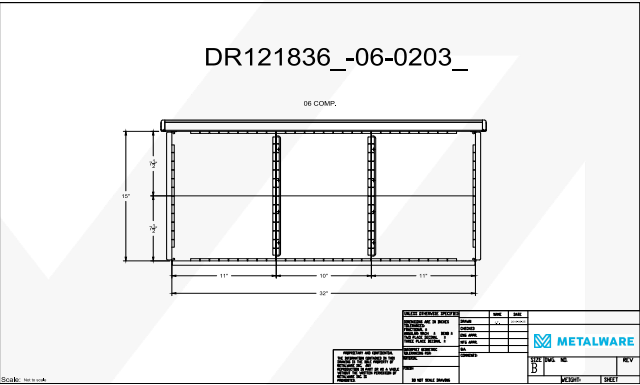


Code	DR121836_-00-0000_	DR121836_-01-0000_	Empty with a mat (not shown)
Nominal H	12"	Useable H	11"
Nominal D	18"	Useable D	15"
Nominal W	36"	Useable W	32"
# dividers	0	Useable D (comp)	15"
# separators	0	Useable W (comp)	32"
# comps	0		



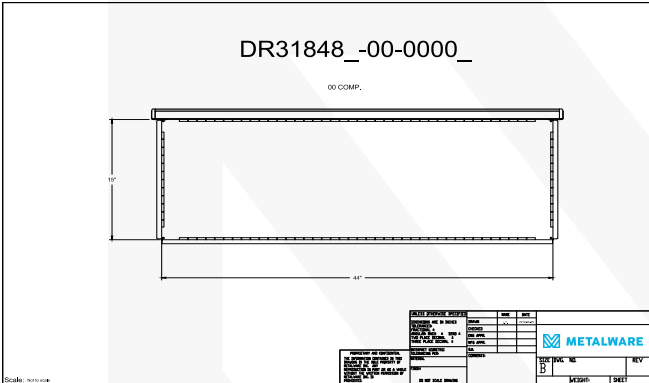
Code	DR121836_-09-0206_
Nominal H	12"
Nominal D	18"
Nominal W	36"
# dividers	6
# separators	2
# comps	9

Note : Images show evenly distributed drawer dividers. Dividers can be dropped into place every inch. Additional dividers are available based on compartment width and drawer height. Drawer separators are screwed into place during assembly but are adjustable every inch.

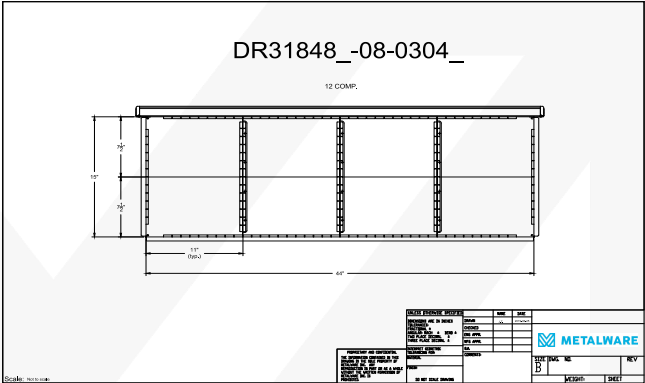


Code	DR121836_-06-0203_
Nominal H	12"
Nominal D	18"
Nominal W	36"
# dividers	3
# separators	2
# comps	6

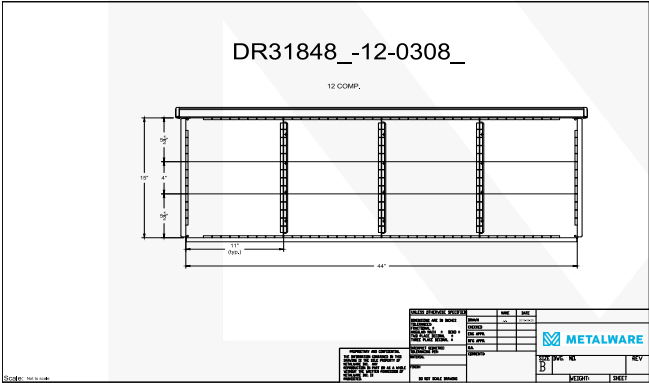
3"



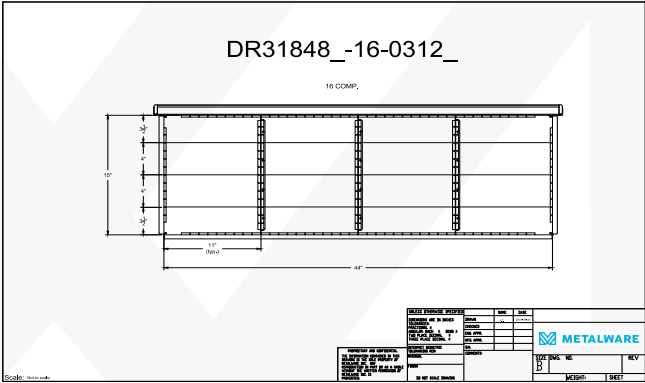
Code	DR31848_-00-0000_	DR31848_-01-0000_ Empty with a mat (not shown)	
Nominal H	3"	Useable H	2"
Nominal D	18"	Useable D	15"
Nominal W	48"	Useable W	44"
# dividers	0	Useable D (comp)	15"
# separators	0	Useable W (comp)	44"
# comps	0		



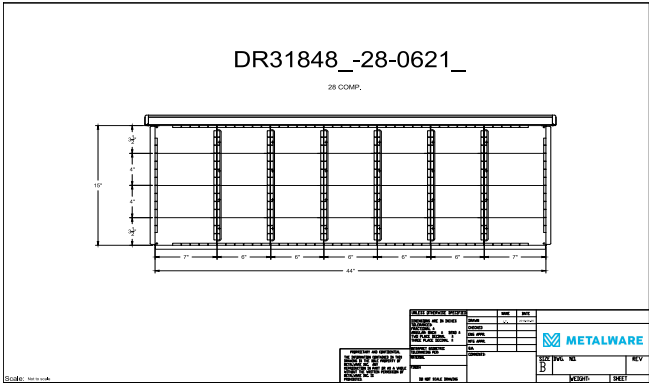
Code	DR31848_-08-0304_		
Nominal H	3"	Useable H	2"
Nominal D	18"	Useable D	15"
Nominal W	48"	Useable W	44"
# dividers	4	Useable D (comp)	7.5"
# separators	3	Useable W (comp)	11"
# comps	8		



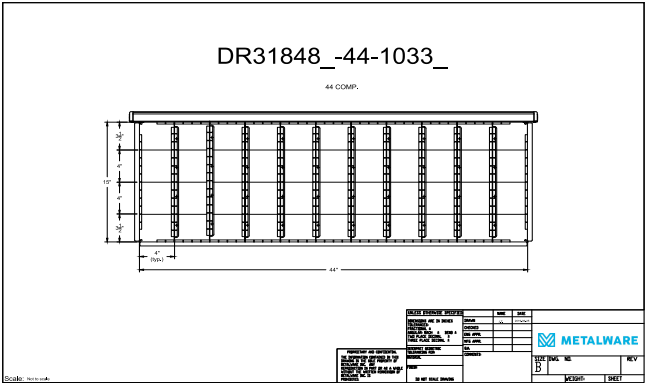
Code	DR31848_-12-0308_		
Nominal H	3"	Useable H	2"
Nominal D	18"	Useable D	15"
Nominal W	48"	Useable W	44"
# dividers	8	Useable D (comp)	5.5", 4", 5.5"
# separators	3	Useable W (comp)	11"
# comps	12		



Code	DR31848_-16-0312		
Nominal H	3"	Useable H	2"
Nominal D	18"	Useable D	15"
Nominal W	48"	Useable W	44"
# dividers	12	Useable D (comp)	3.5", 4", 4, 3.5"
# separators	3	Useable W (comp)	11"
# comps	16		



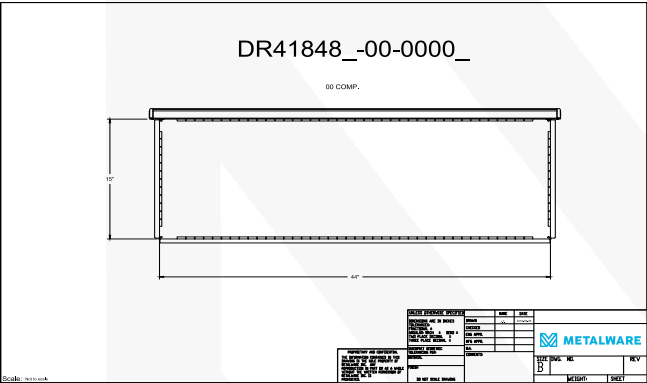
Code	DR31848_-28-0621_		
Nominal H	3"	Useable H	2"
Nominal D	18"	Useable D	15"
Nominal W	48"	Useable W	44"
# dividers	21	Useable D (comp)	3.5", 4", 4", 3.5"
# separators	6	Useable W (comp)	7", 6", 6", 6", 6", 7"
# comps	28		



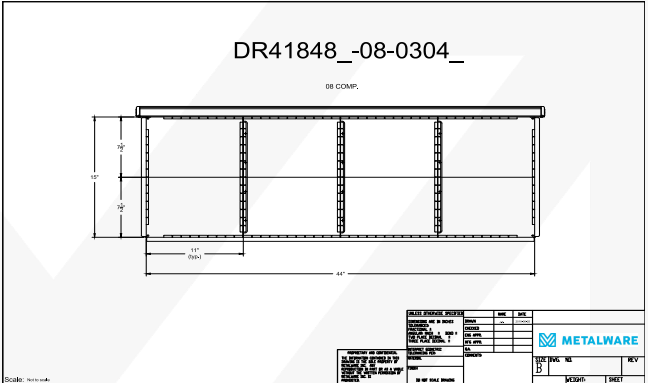
Code	DR31848_-44-1033		
Nominal H	3"	Useable H	2"
Nominal D	18"	Useable D	15"
Nominal W	48"	Useable W	44"
# dividers	33	Useable D (comp)	3.5", 4", 4", 3.5"
# separators	10	Useable W (comp)	4"
# comps	44		

Note : Images show evenly distributed drawer dividers. Dividers can be dropped into place every inch. Additional dividers are available based on compartment width and drawer height. Drawer separators are screwed into place during assembly but are adjustable every inch.

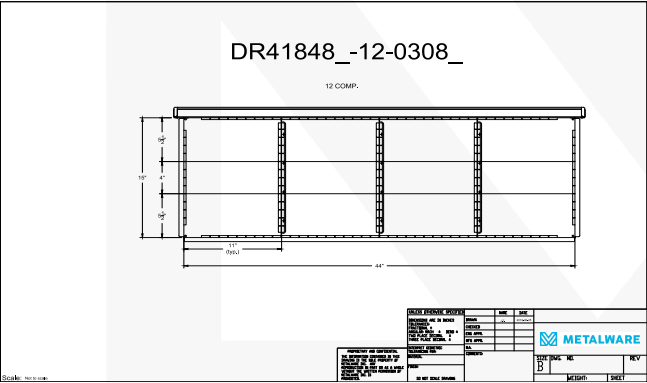
4"



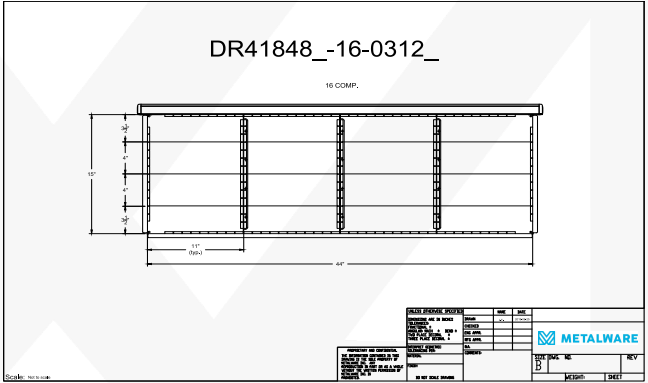
Code	DR41848_-00-0000_	DR41848_-01-0000_ Empty with a mat (not shown)	
Nominal H	4"	Useable H	3"
Nominal D	18"	Useable D	15"
Nominal W	48"	Useable W	44"
# dividers	0	Useable D (comp)	15"
# separators	0	Useable W (comp)	44"
# comps	0		



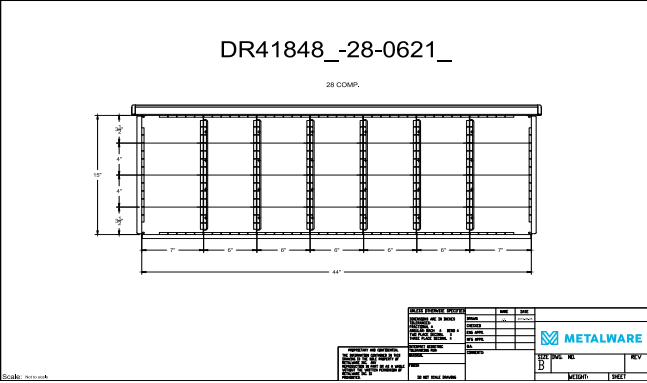
Code	DR41848_-08-0304_		
Nominal H	4"	Useable H	3"
Nominal D	18"	Useable D	15"
Nominal W	48"	Useable W	44"
# dividers	4	Useable D (comp)	7.5"
# separators	3	Useable W (comp)	11"
# comps	8		



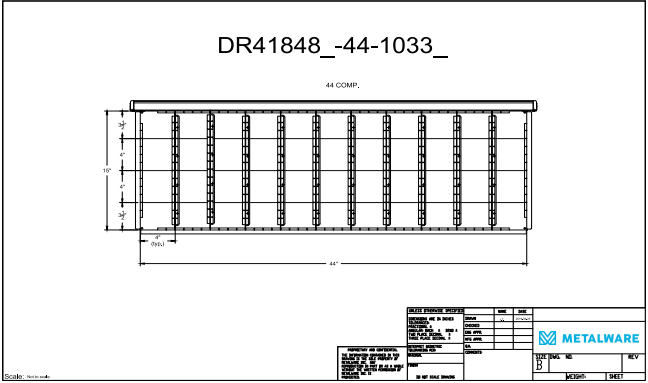
Code	DR41848_-12-0308_		
Nominal H	4"	Useable H	3"
Nominal D	18"	Useable D	15"
Nominal W	48"	Useable W	44"
# dividers	8	Useable D (comp)	5.5", 4", 5.5"
# separators	3	Useable W (comp)	11"
# comps	12		



Code	DR41848_-16-0312		
Nominal H	4"	Useable H	3"
Nominal D	18"	Useable D	15"
Nominal W	48"	Useable W	44"
# dividers	12	Useable D (comp)	3.5", 4", 3.5"
# separators	3	Useable W (comp)	11"
# comps	16		



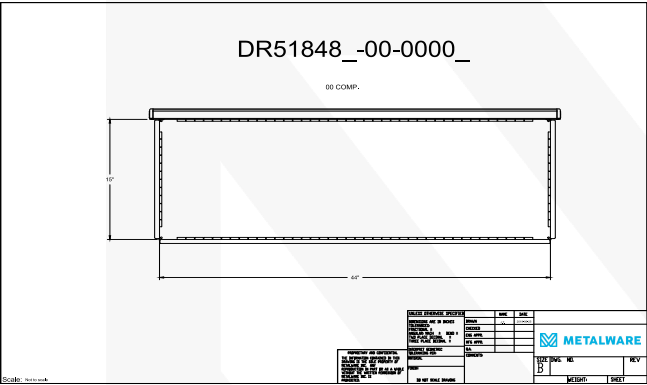
Code	DR41848_-28-0621_		
Nominal H	4"	Useable H	3"
Nominal D	18"	Useable D	15"
Nominal W	48"	Useable W	44"
# dividers	21	Useable D (comp)	3.5", 4", 4", 3.5"
# separators	6	Useable W (comp)	7", 6", 6", 6", 6", 6", 7"
# comps	28		



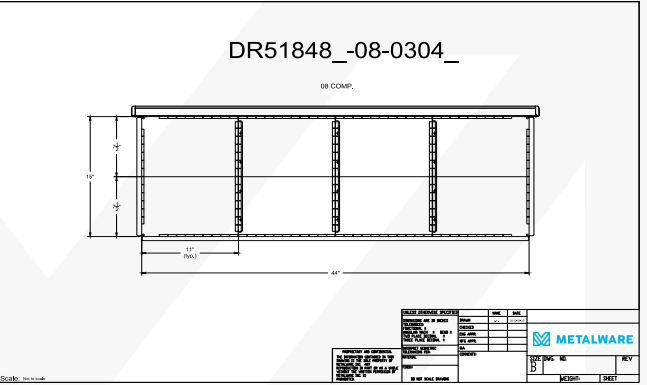
Code	DR41848_-44-1033		
Nominal H	4"	Useable H	3"
Nominal D	18"	Useable D	15"
Nominal W	48"	Useable W	44"
# dividers	33	Useable D (comp)	3.5", 4", 4", 3.5"
# separators	10	Useable W (comp)	4"
# comps	44		

Note : Images show evenly distributed drawer dividers. Dividers can be dropped into place every inch. Additional dividers are available based on compartment width and drawer height. Drawer separators are screwed into place during assembly but are adjustable every inch.

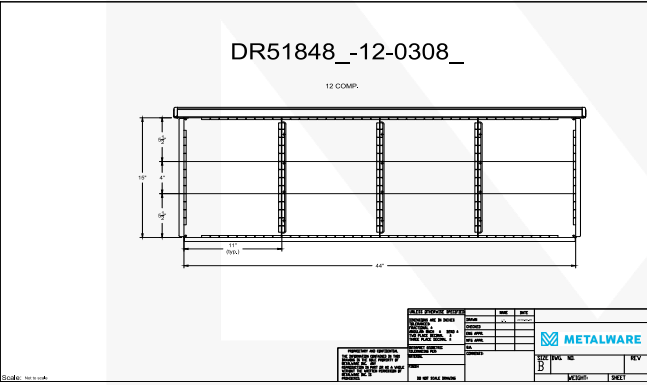
5"



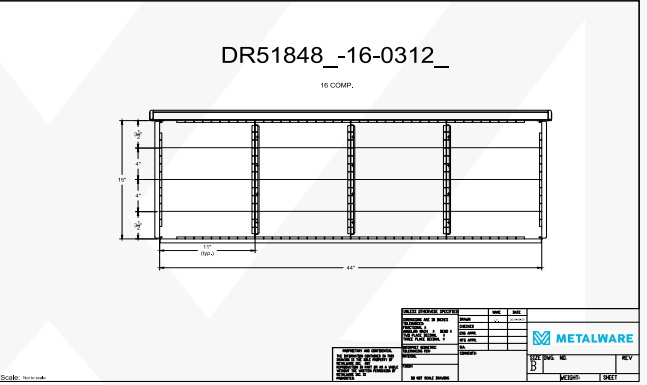
Code	DR51848_-00-0000_	DR51848_-01-0000_	Empty with a mat (not shown)
Nominal H	5"	Useable H	4"
Nominal D	18"	Useable D	15"
Nominal W	48"	Useable W	44"
# dividers	0	Useable D (comp)	15"
# separators	0	Useable W (comp)	44"
# comps	0		



Code	DR51848_-08-0304		
Nominal H	5"	Useable H	4"
Nominal D	18"	Useable D	15"
Nominal W	48"	Useable W	44"
# dividers	4	Useable D (comp)	7.5"
# separators	3	Useable W (comp)	11"
# comps	8		



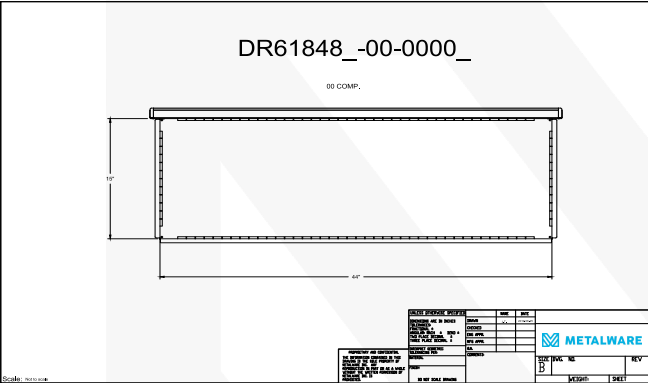
Code	DR51848_-12-0308_		
Nominal H	5"	Useable H	4"
Nominal D	18"	Useable D	15"
Nominal W	48"	Useable W	44"
# dividers	8	Useable D (comp)	5.5", 4", 5.5"
# separators	3	Useable W (comp)	11"
# comps	12		



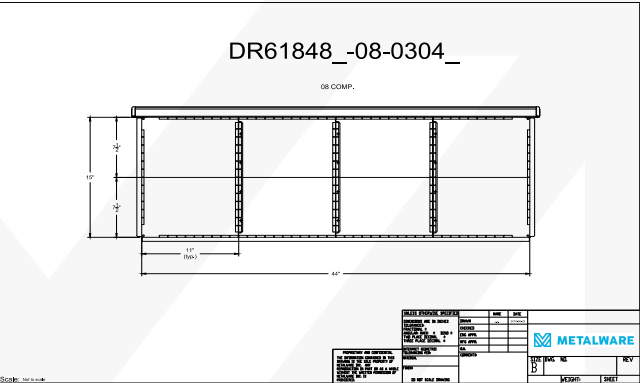
Code	DR51848_-16-0312		
Nominal H	5"	Useable H	4"
Nominal D	18"	Useable D	15"
Nominal W	48"	Useable W	44"
# dividers	12	Useable D (comp)	3.5", 4", 4", 3.5"
# separators	3	Useable W (comp)	11"
# comps	16		

Note : Images show evenly distributed drawer dividers. Dividers can be dropped into place every inch. Additional dividers are available based on compartment width and drawer height. Drawer separators are screwed into place during assembly but are adjustable every inch.

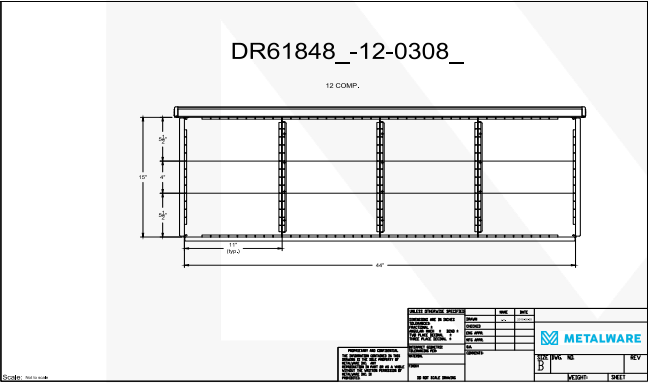
6"



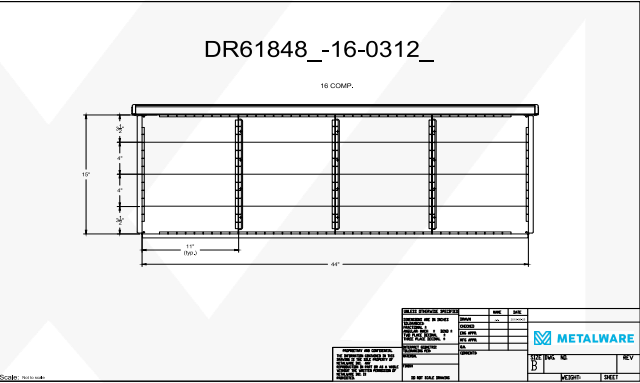
Code	DR61848_-00-0000_	DR61848_-01-0000_ Empty with a mat (not shown)	
Nominal H	6"	Useable H	5"
Nominal D	18"	Useable D	15"
Nominal W	48"	Useable W	44"
# dividers	0	Useable D (comp)	15"
# separators	0	Useable W (comp)	44"
# comps	0		



Code	DR61848_-08-0304_		
Nominal H	6"	Useable H	5"
Nominal D	18"	Useable D	15"
Nominal W	48"	Useable W	44"
# dividers	4	Useable D (comp)	7.5"
# separators	3	Useable W (comp)	11"
# comps	8		



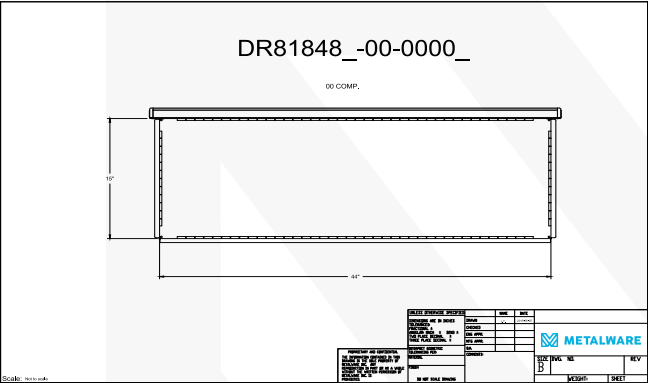
Code	D61848_-12-0308_		
Nominal H	6"	Useable H	5"
Nominal D	18"	Useable D	15"
Nominal W	48"	Useable W	44"
# dividers	8	Useable D (comp)	5.5", 4", 5.5"
# separators	3	Useable W (comp)	11"
# comps	12		



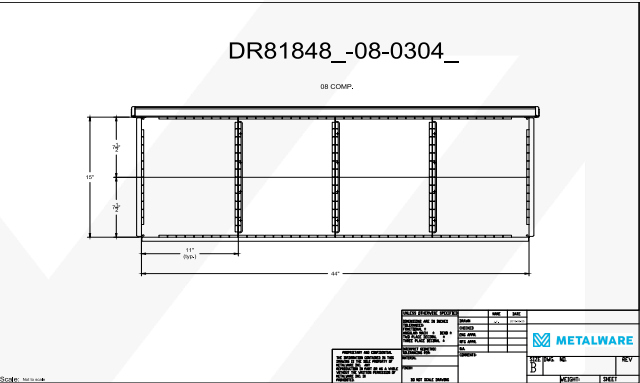
Code	DR61848_-16-0312		
Nominal H	6"	Useable H	5"
Nominal D	18"	Useable D	15"
Nominal W	48"	Useable W	44"
# dividers	12	Useable D (comp)	3.5", 4", 4", 3.5"
# separators	3	Useable W (comp)	11"
# comps	16		

Note : Images show evenly distributed drawer dividers. Dividers can be dropped into place every inch. Additional dividers are available based on compartment width and drawer height. Drawer separators are screwed into place during assembly but are adjustable every inch.

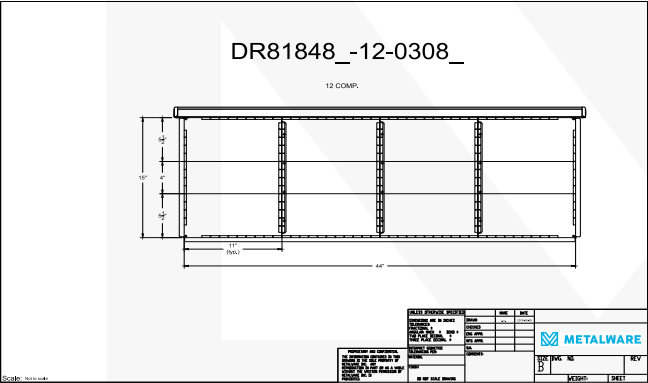
8"



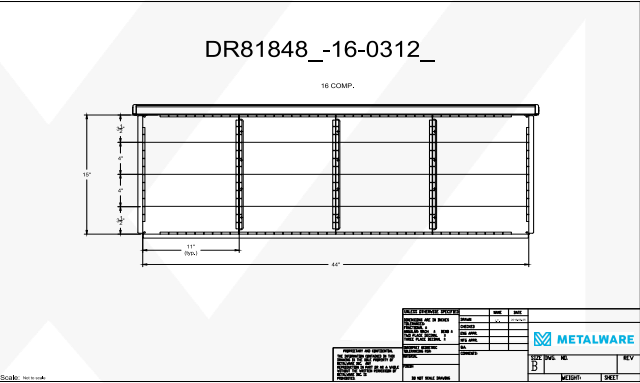
Code	DR81848_-00-0000_	DR81848_-01-0000_	Empty with a mat (not shown)
Nominal H	8"	Useable H	7"
Nominal D	18"	Useable D	15"
Nominal W	48"	Useable W	44"
# dividers	0	Useable D (comp)	15"
# separators	0	Useable W (comp)	44"
# comps	0		



Code	DR81848_-08-0304		
Nominal H	8"	Useable H	7"
Nominal D	18"	Useable D	15"
Nominal W	48"	Useable W	44"
# dividers	4	Useable D (comp)	7.5"
# separators	3	Useable W (comp)	11"
# comps	8		



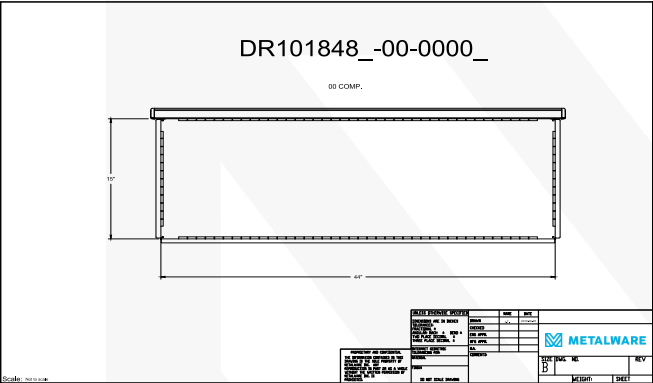
Code	D81848_-12-0308_		
Nominal H	8"	Useable H	7"
Nominal D	18"	Useable D	15"
Nominal W	48"	Useable W	44"
# dividers	8	Useable D (comp)	5.5", 4", 5.5"
# separators	3	Useable W (comp)	11"
# comps	12		



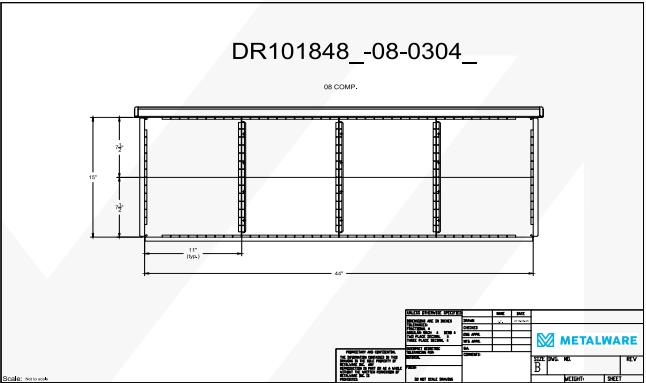
Code	DR81848_-16-0312_		
Nominal H	8"	Useable H	7"
Nominal D	18"	Useable D	15"
Nominal W	48"	Useable W	44"
# dividers	12	Useable D (comp)	3.5", 4", 4", 3.5"
# separators	3	Useable W (comp)	11"
# comps	16		

Note : Images show evenly distributed drawer dividers. Dividers can be dropped into place every inch. Additional dividers are available based on compartment width and drawer height. Drawer separators are screwed into place during assembly but are adjustable every inch.

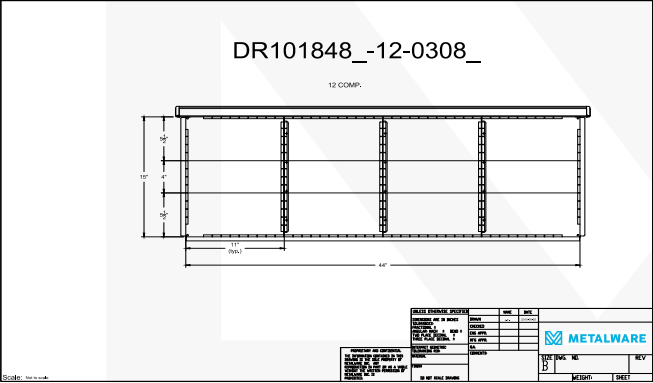
10"



Code	DR101848_-00-0000_	DR101848_-01-0000_	Empty with a mat (not shown)
Nominal H	10"	Useable H	9"
Nominal D	18"	Useable D	15"
Nominal W	48"	Useable W	44"
# dividers	0	Useable D (comp)	15"
# separators	0	Useable W (comp)	44"
# comps	0		



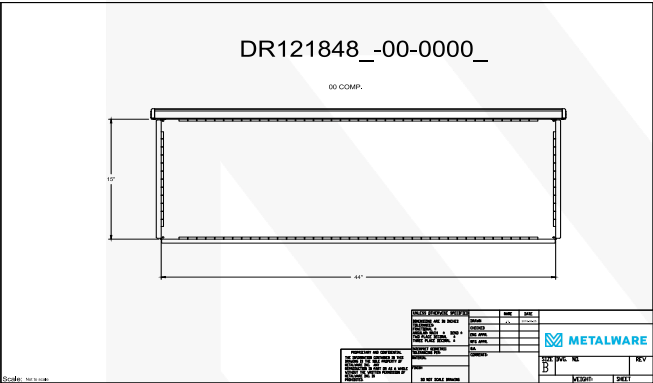
Code	DR101848_-08-0304_
Nominal H	10"
Nominal D	18"
Nominal W	48"
# dividers	4
# separators	3
# comps	8



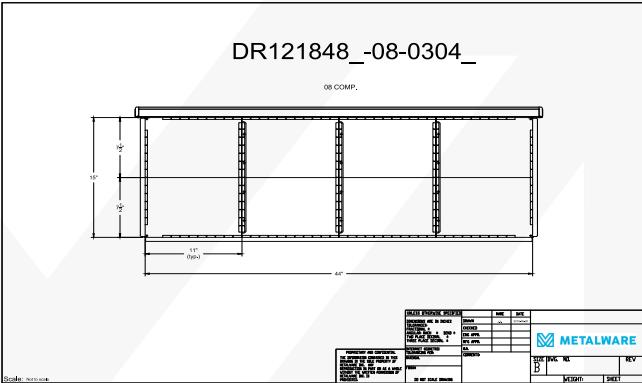
Code	D101848_-12-0308_
Nominal H	10"
Nominal D	18"
Nominal W	48"
# dividers	8
# separators	3
# comps	12

Note : Images show evenly distributed drawer dividers. Dividers can be dropped into place every inch. Additional dividers are available based on compartment width and drawer height. Drawer separators are screwed into place during assembly but are adjustable every inch.

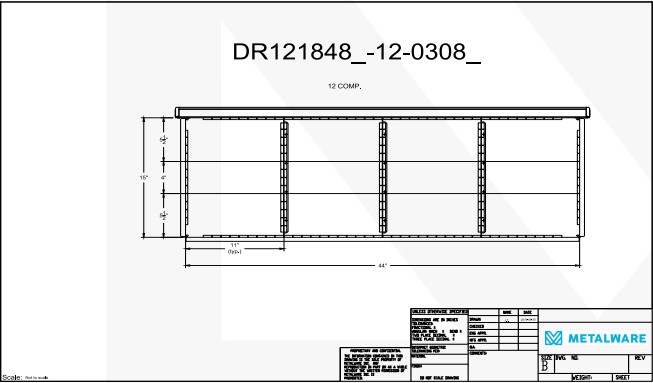
12"



Code	DR121848_-00-0000_	DR121836_-01-0000_	Empty with a mat (not shown)
Nominal H	12"	Useable H	11"
Nominal D	18"	Useable D	15"
Nominal W	48"	Useable W	44"
# dividers	0	Useable D (comp)	15"
# separators	0	Useable W (comp)	44"
# comps	0		



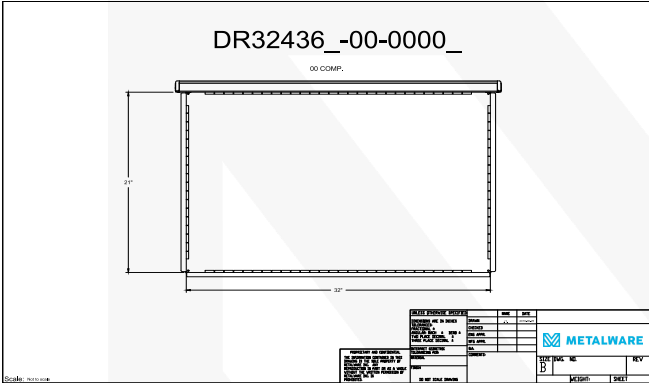
Code	DR121848_-08-0304		
Nominal H	12"	Useable H	11"
Nominal D	18"	Useable D	15"
Nominal W	48"	Useable W	44"
# dividers	4	Useable D (comp)	7.5"
# separators	3	Useable W (comp)	11"
# comps	8		



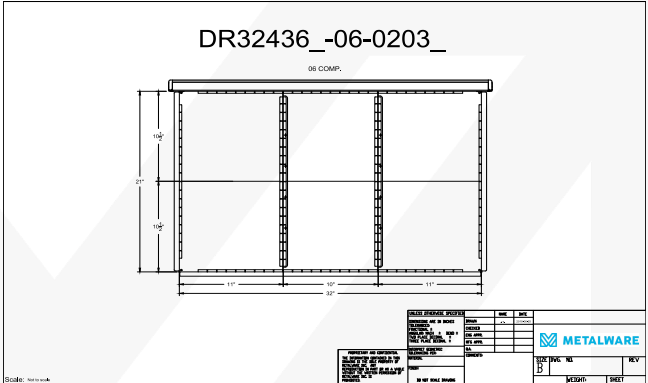
Code	D121848_-12-0308_		
Nominal H	12"	Useable H	11"
Nominal D	18"	Useable D	15"
Nominal W	48"	Useable W	44"
# dividers	8	Useable D (comp)	5.5", 4", 5.5"
# separators	3	Useable W (comp)	11"
# comps	12		

Note : Images show evenly distributed drawer dividers. Dividers can be dropped into place every inch. Additional dividers are available based on compartment width and drawer height. Drawer separators are screwed into place during assembly but are adjustable every inch.

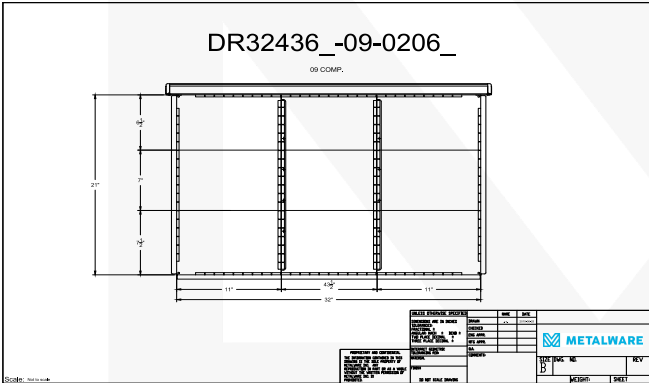
3"



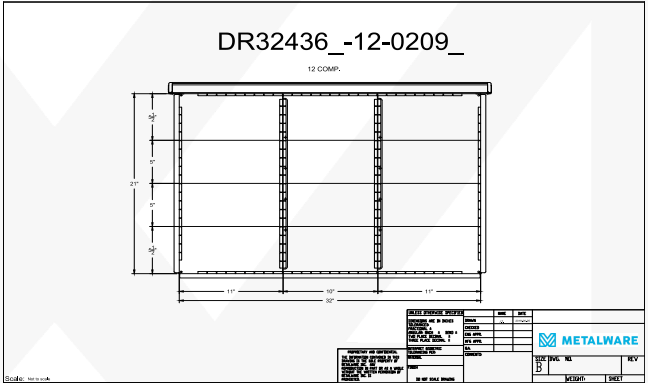
Code	DR32436_-00-0000_	DR32436_-01-0000_ Empty with a mat (not shown)	
Nominal H	3"	Useable H	2"
Nominal D	24"	Useable D	21"
Nominal W	36"	Useable W	32"
# dividers	0	Useable D (comp)	21"
# separators	0	Useable W (comp)	32"
# comps	0		



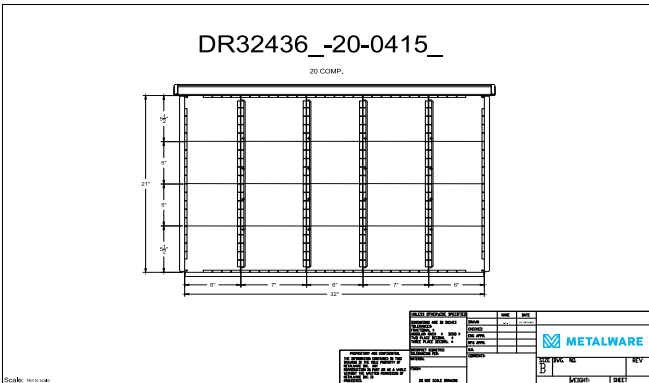
Code	DR32436_-06-0203		
Nominal H	3"	Useable H	2"
Nominal D	24"	Useable D	21"
Nominal W	36"	Useable W	32"
# dividers	3	Useable D (comp)	10.5"
# separators	2	Useable W (comp)	11", 10", 11"
# comps	6		



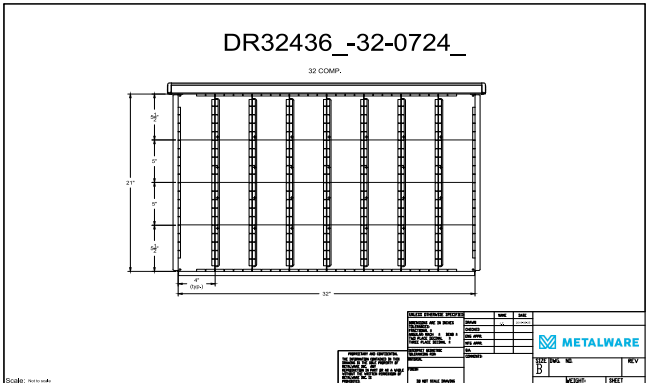
Code	DR32436_-09-0206_		
Nominal H	3"	Useable H	2"
Nominal D	24"	Useable D	21"
Nominal W	36"	Useable W	32"
# dividers	6	Useable D (comp)	6.5", 7", 7.5"
# separators	2	Useable W (comp)	11", 43.5", 11"
# comps	9		



Code	DR32436_-12-0209_		
Nominal H	3"	Useable H	2"
Nominal D	24"	Useable D	21"
Nominal W	36"	Useable W	32"
# dividers	9	Useable D (comp)	5.5", 5", 5", 5.5"
# separators	2	Useable W (comp)	11", 10", 11"
# comps	12		



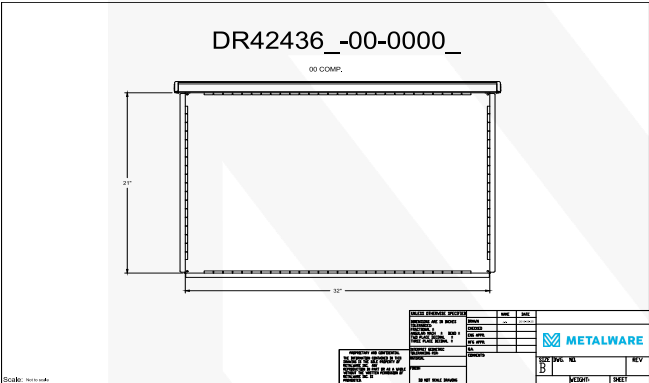
Code	DR32436_-20-0415_		
Nominal H	3"	Useable H	2"
Nominal D	24"	Useable D	21"
Nominal W	36"	Useable W	32"
# dividers	15	Useable D (comp)	5.5", 5", 5", 5.5"
# separators	4	Useable W (comp)	6", 7", 6", 7", 6"
# comps	20		



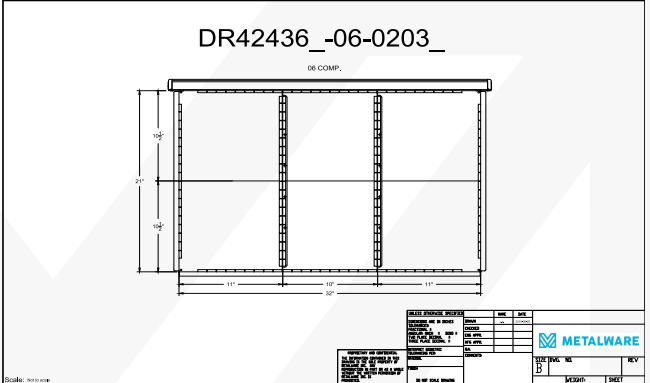
Code	DR32436_-32-0724_		
Nominal H	3"	Useable H	2"
Nominal D	24"	Useable D	21"
Nominal W	36"	Useable W	32"
# dividers	24	Useable D (comp)	5.5", 5", 5", 5.5"
# separators	7	Useable W (comp)	4"
# comps	32		

Note : Images show evenly distributed drawer dividers. Dividers can be dropped into place every inch. Additional dividers are available based on compartment width and drawer height. Drawer separators are screwed into place during assembly but are adjustable every inch.

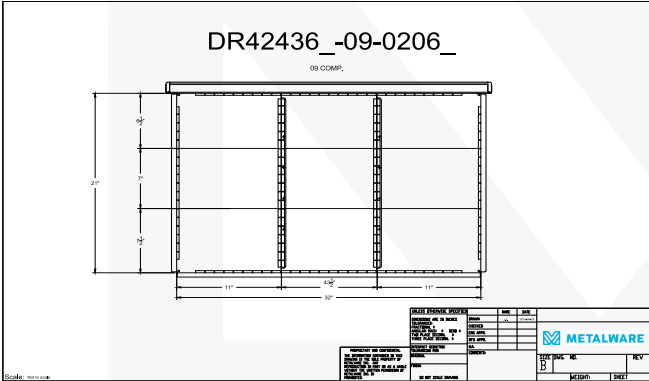
4"



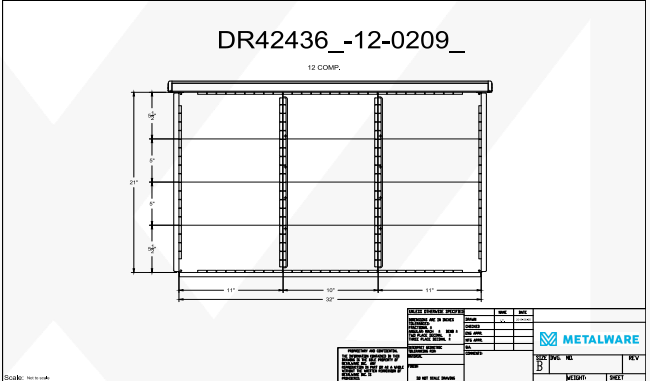
Code	DR42436_-00-0000_	DR42436_-01-0000_ Empty with a mat (not shown)	
Nominal H	4"	Useable H	3"
Nominal D	24"	Useable D	21"
Nominal W	36"	Useable W	32"
# dividers	0	Useable D (comp)	21"
# separators	0	Useable W (comp)	32"
# comps	0		



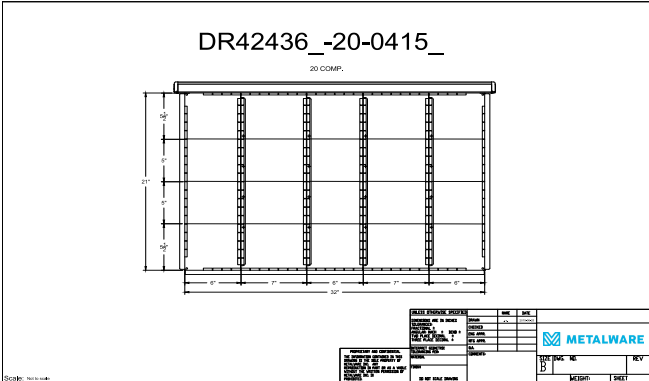
Code	DR42436_-06-0203		
Nominal H	4"	Useable H	3"
Nominal D	24"	Useable D	21"
Nominal W	36"	Useable W	32"
# dividers	3	Useable D (comp)	10.5"
# separators	2	Useable W (comp)	11", 10", 11"
# comps	6		



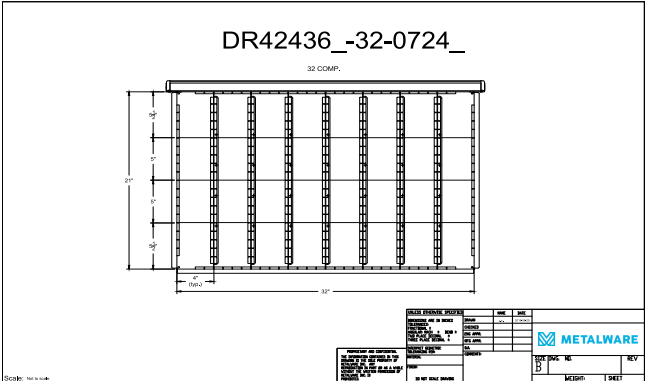
Code	DR42436_-09-0206_		
Nominal H	4"	Useable H	3"
Nominal D	24"	Useable D	21"
Nominal W	36"	Useable W	32"
# dividers	6	Useable D (comp)	6.5", 7", 7.5"
# separators	2	Useable W (comp)	11", 43.5", 11"
# comps	9		



Code	DR41836_-12-0209_		
Nominal H	4"	Useable H	3"
Nominal D	24"	Useable D	21"
Nominal W	36"	Useable W	32"
# dividers	9	Useable D (comp)	5.5", 5", 5", 5.5"
# separators	2	Useable W (comp)	11", 10", 11"
# comps	12		



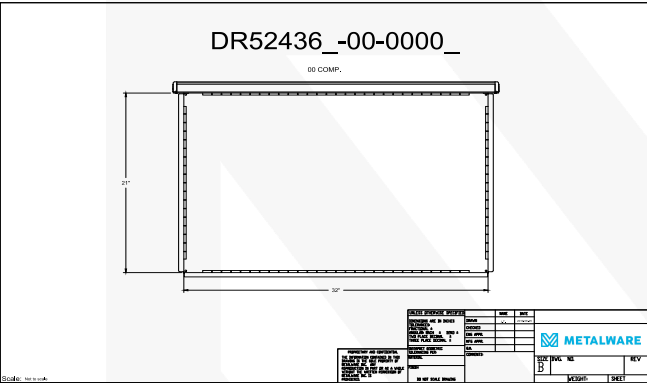
Code	DR42436_-20-0415_		
Nominal H	4"	Useable H	3"
Nominal D	24"	Useable D	21"
Nominal W	36"	Useable W	32"
# dividers	15	Useable D (comp)	5.5", 5", 5", 5.5"
# separators	4	Useable W (comp)	6", 7", 6", 7", 6"
# comps	20		



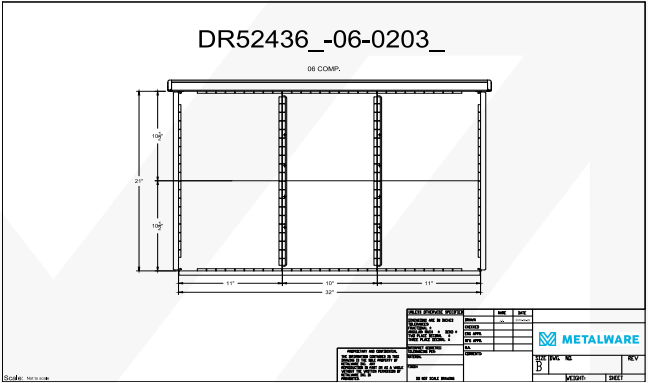
Code	DR42436_-32-0724_		
Nominal H	4"	Useable H	3"
Nominal D	24"	Useable D	21"
Nominal W	36"	Useable W	32"
# dividers	24	Useable D (comp)	5.5", 5", 5", 5.5"
# separators	7	Useable W (comp)	4"
# comps	32		

Note : Images show evenly distributed drawer dividers. Dividers can be dropped into place every inch. Additional dividers are available based on compartment width and drawer height. Drawer separators are screwed into place during assembly but are adjustable every inch.

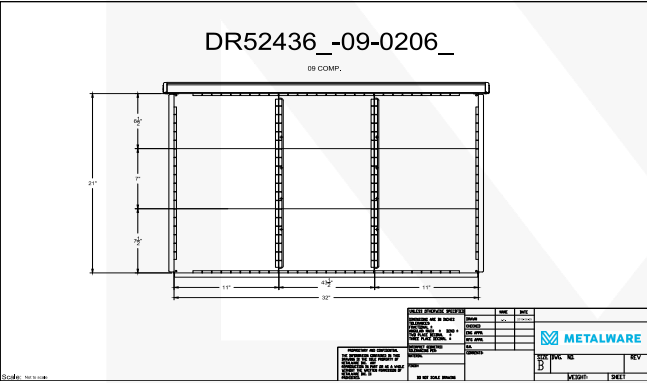
5"



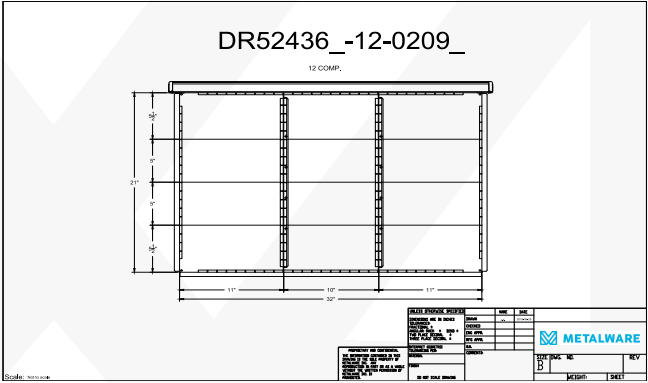
Code	DR52436_-00-0000_	DR52436_-01-0000_ Empty with a mat (not shown)	
Nominal H	5"	Useable H	4"
Nominal D	24"	Useable D	21"
Nominal W	36"	Useable W	32"
# dividers	0	Useable D (comp)	21"
# separators	0	Useable W (comp)	32"
# comps	0		



Code	DR52436_-06-0203		
Nominal H	5"	Useable H	4"
Nominal D	24"	Useable D	21"
Nominal W	36"	Useable W	32"
# dividers	3	Useable D (comp)	10.5"
# separators	2	Useable W (comp)	11", 10", 11"
# comps	6		



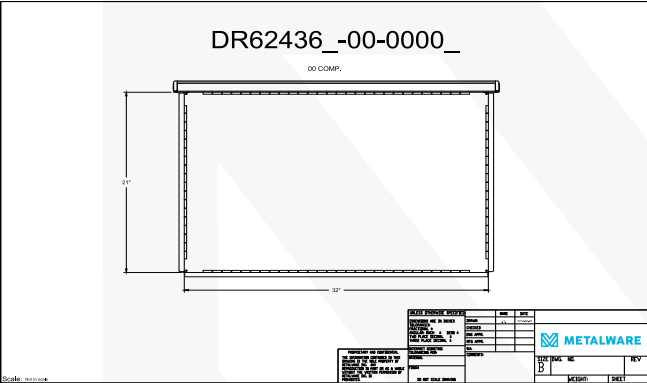
Code	DR52436_-09-0206_		
Nominal H	5"	Useable H	4"
Nominal D	24"	Useable D	21"
Nominal W	36"	Useable W	32"
# dividers	6	Useable D (comp)	6.5", 7", 7.5"
# separators	2	Useable W (comp)	11", 43.5", 11"
# comps	9		



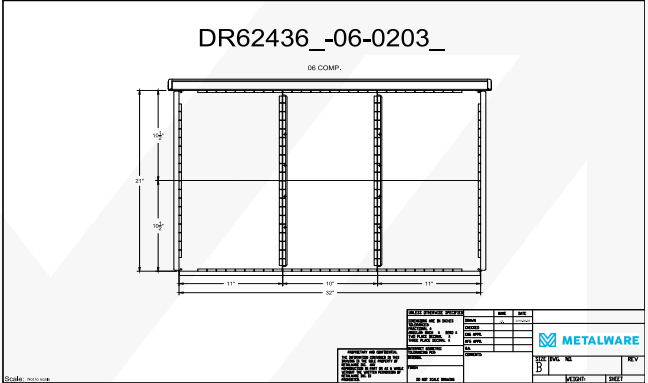
Code	DR52436_-12-0209		
Nominal H	5"	Useable H	4"
Nominal D	24"	Useable D	21"
Nominal W	36"	Useable W	32"
# dividers	9	Useable D (comp)	5.5", 5", 5", 5.5"
# separators	2	Useable W (comp)	11", 10", 11"
# comps	12		

Note : Images show evenly distributed drawer dividers. Dividers can be dropped into place every inch. Additional dividers are available based on compartment width and drawer height. Drawer separators are screwed into place during assembly but are adjustable every inch.

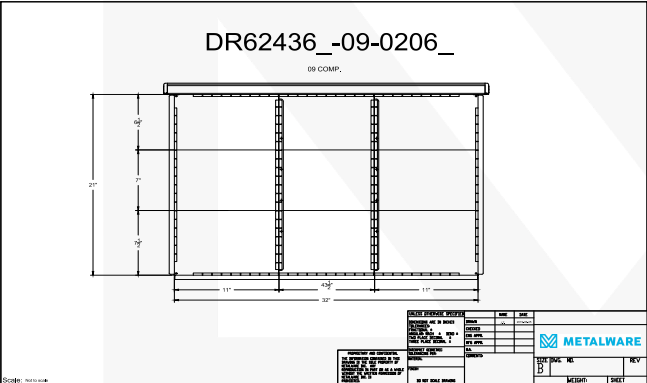
6"



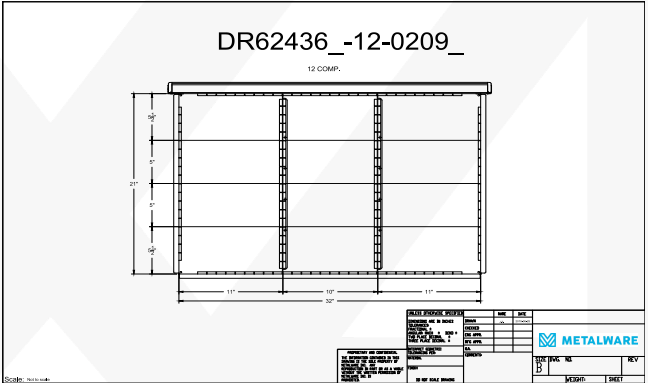
Code	DR62436_-00-0000_	DR62436_-01-0000_ Empty with a mat (not shown)	
Nominal H	6"	Actual H	5"
Nominal D	24"	Actual D	21"
Nominal W	36"	Actual W	32"
# dividers	0	Actual D comp	21"
# separators	0	Actual W comp	32"
# comps	0		



Code	DR62436_-06-0203_		
Nominal H	6"	Actual H	5"
Nominal D	24"	Actual D	21"
Nominal W	36"	Actual W	32"
# dividers	3	Actual D comp	10.5"
# separators	2	Actual W comp	11", 10", 11"
# comps	6		

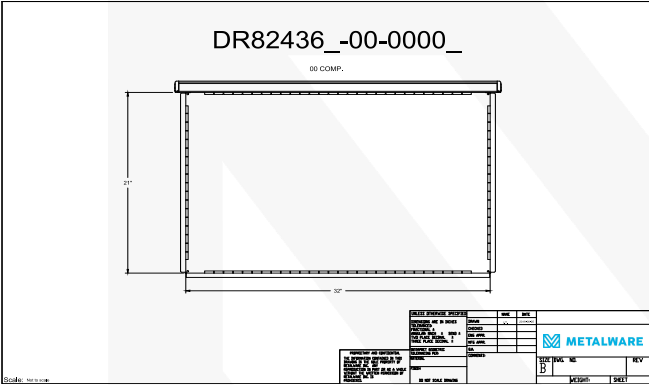


Code	DR62436_-09-0206_		
Nominal H	6"	Actual H	5"
Nominal D	24"	Actual D	21"
Nominal W	36"	Actual W	32"
# dividers		Actual D comp	6.5", 7", 7.5"
# separators	2	Actual W comp	11", 43.5", 11"
# comps	9		

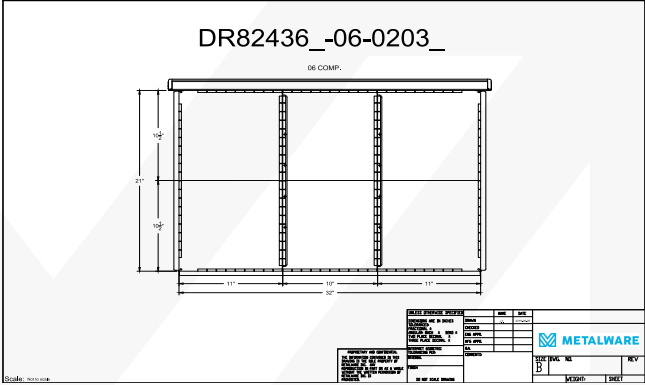


Code	DR62436_-12-0209_		
Nominal H	6"	Actual H	5"
Nominal D	24"	Actual D	21"
Nominal W	36"	Actual W	32"
# dividers	9	Actual D comp	5.5", 5", 5", 5.5"
# separators	2	Actual W comp	11", 10", 11"
# comps	12		

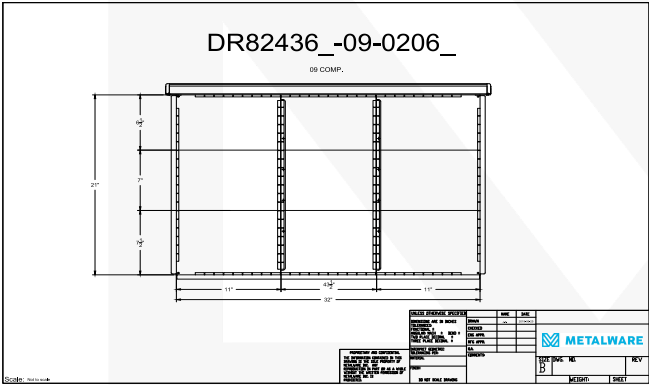
8"



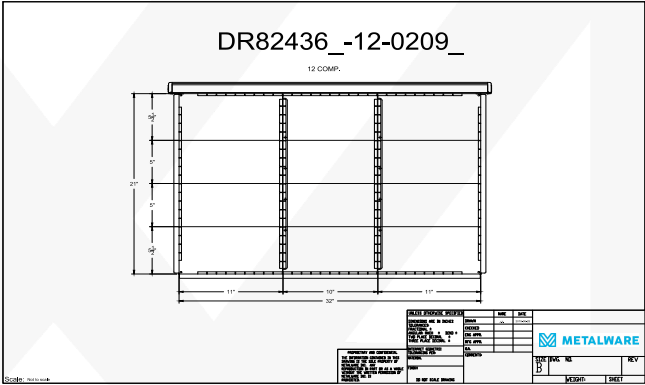
Code	DR82436_-00-0000_	DR82436_-01-0000_ Empty with a mat (not shown)	
Nominal H	8"	Useable H	7"
Nominal D	24"	Useable D	21"
Nominal W	36"	Useable W	32"
# dividers	0	Useable D (comp)	21"
# separators	0	Useable W (comp)	32"
# comps	0		



Code	DR82436_-06-0203		
Nominal H	8"	Useable H	7"
Nominal D	24"	Useable D	21"
Nominal W	36"	Useable W	32"
# dividers	3	Useable D (comp)	10.5"
# separators	2	Useable W (comp)	11", 10", 11"
# comps	6		



Code	DR82436_-09-0206_		
Nominal H	8"	Useable H	7"
Nominal D	24"	Useable D	21"
Nominal W	36"	Useable W	32"
# dividers	6	Useable D (comp)	6.5", 7", 7.5"
# separators	2	Useable W (comp)	11", 43.5", 11"
# comps	9		

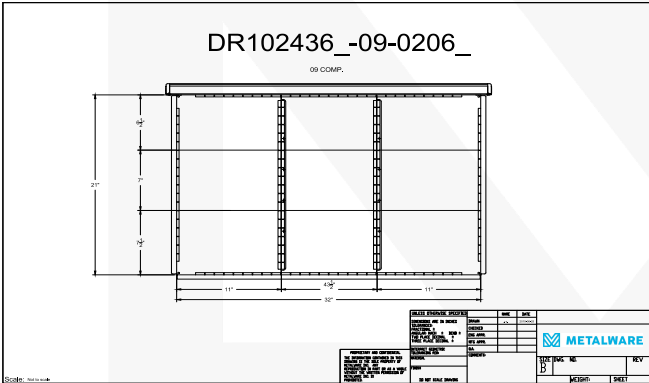
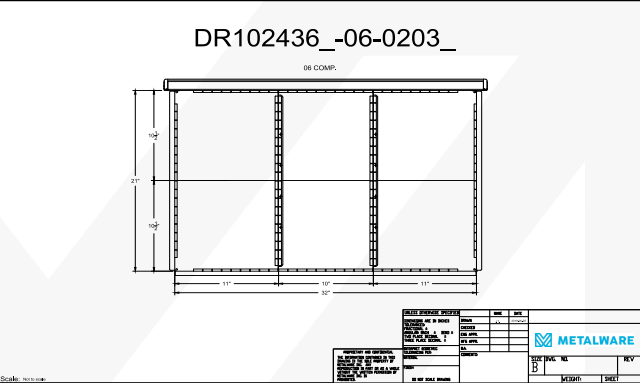
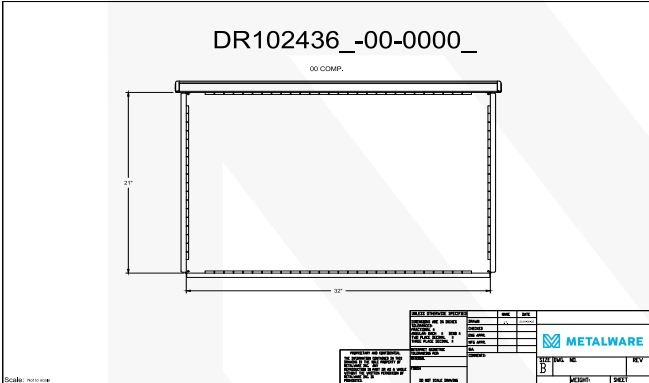


Code	DR82436_-12-0209		
Nominal H	8"	Useable H	7"
Nominal D	24"	Useable D	21"
Nominal W	36"	Useable W	32"
# dividers	9	Useable D (comp)	5.5", 5", 5", 5.5"
# separators	2	Useable W (comp)	11", 10", 11"
# comps	12		

Note : Images show evenly distributed drawer dividers. Dividers can be dropped into place every inch. Additional dividers are available based on compartment width and drawer height. Drawer separators are screwed into place during assembly but are adjustable every inch.



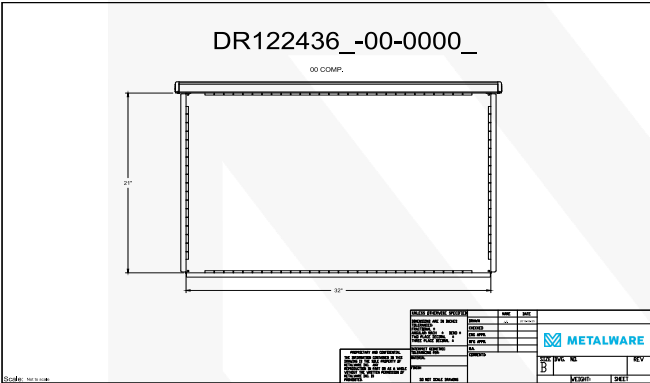
10"



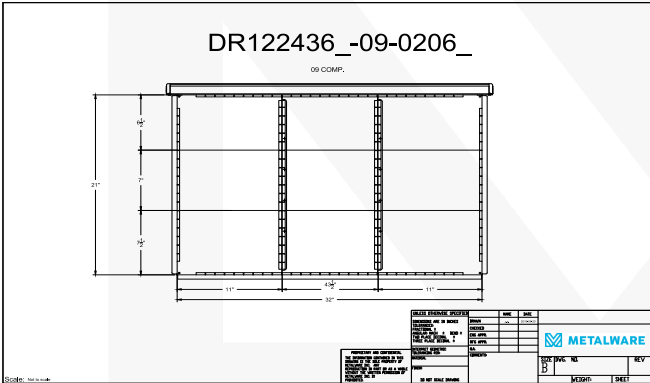
Note : Images show evenly distributed drawer dividers. Dividers can be dropped into place every inch. Additional dividers are available based on compartment width and drawer height. Drawer separators are screwed into place during assembly but are adjustable every inch.



12"

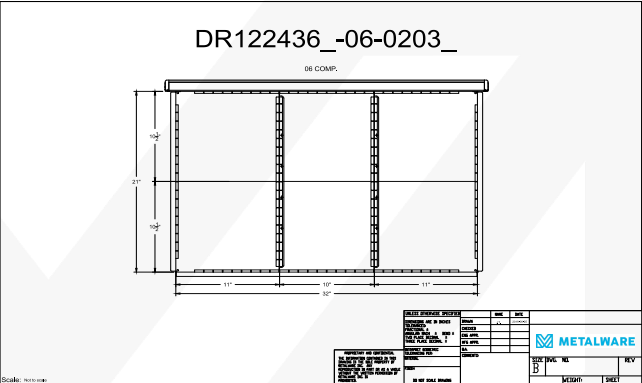


Code	DR122436_-00-0000_	DR122436_-01-0000_ Empty with a mat (not shown)	
Nominal H	12"	Useable H	11"
Nominal D	24"	Useable D	21"
Nominal W	36"	Useable W	32"
# dividers	0	Useable D (comp)	21"
# separators	0	Useable W (comp)	32"
# comps	0		



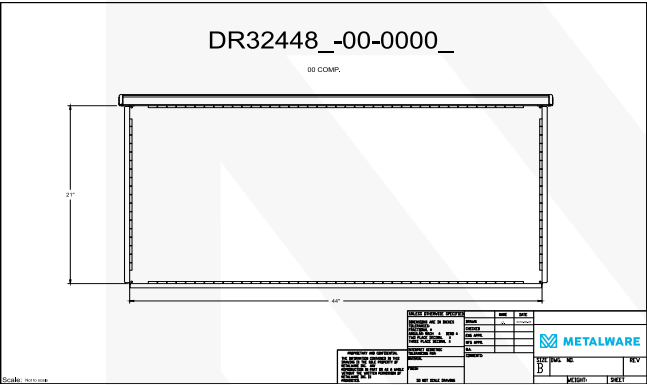
Code	DR122436_-09-0206		
Nominal H	12"	Useable H	11"
Nominal D	24"	Useable D	21"
Nominal W	36"	Useable W	32"
# dividers	6	Useable D (comp)	6.5", 7", 7.5"
# separators	2	Useable W (comp)	11", 43.5", 11"
# comps	9		

Note : Images show evenly distributed drawer dividers. Dividers can be dropped into place every inch. Additional dividers are available based on compartment width and drawer height. Drawer separators are screwed into place during assembly but are adjustable every inch.

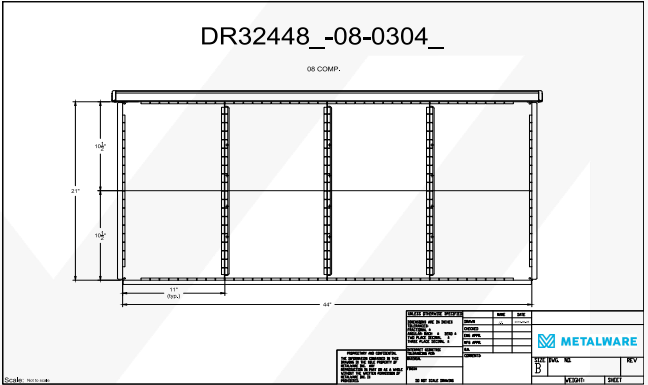


Code	DR122436_-06-0203		
Nominal H	12"	Useable H	11"
Nominal D	24"	Useable D	21"
Nominal W	36"	Useable W	32"
# dividers	3	Useable D (comp)	10.5"
# separators	2	Useable W (comp)	11", 10", 11"
# comps	6		

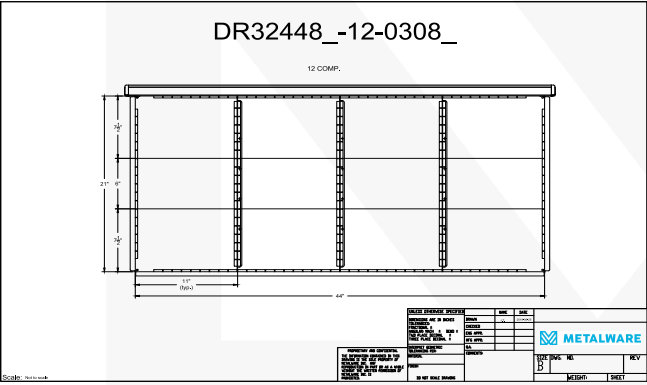
3"



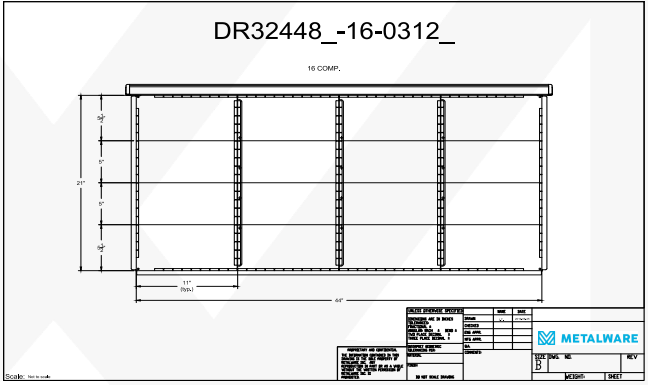
Code	DR32448_-00-0000_	DR32448_-01-0000_	Empty with a mat (not shown)
Nominal H	3"	Useable H	2"
Nominal D	24"	Useable D	21"
Nominal W	48"	Useable W	44"
# dividers	0	Useable D (comp)	21"
# separators	0	Useable W (comp)	44"
# comps	0		



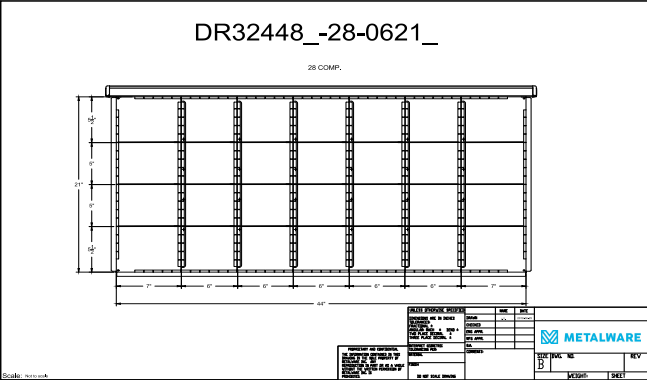
Code	DR32448_-08-0304		
Nominal H	3"	Useable H	2"
Nominal D	24"	Useable D	21"
Nominal W	48"	Useable W	44"
# dividers	4	Useable D (comp)	10.5"
# separators	3	Useable W (comp)	11"
# comps	8		



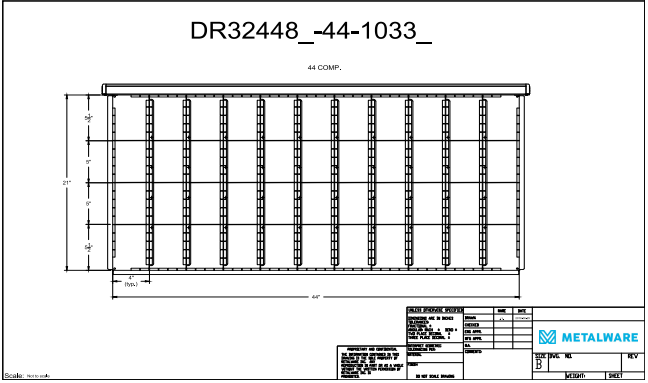
Code	DR32448_-12-0308_		
Nominal H	3"	Useable H	2"
Nominal D	24"	Useable D	21"
Nominal W	48"	Useable W	44"
# dividers	8	Useable D (comp)	7.5", 6", 7.5"
# separators	3	Useable W (comp)	11"
# comps	12		



Code	DR32448_-16-0312		
Nominal H	3"	Useable H	2"
Nominal D	24"	Useable D	21"
Nominal W	48"	Useable W	44"
# dividers	12	Useable D (comp)	5.5", 5", 5", 5.5"
# separators	3	Useable W (comp)	11"
# comps	16		



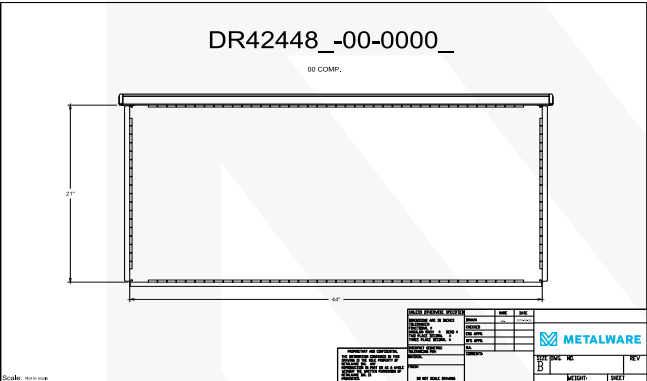
Code	DR32448_-28-0621_		
Nominal H	3"	Useable H	2"
Nominal D	24"	Useable D	21"
Nominal W	48"	Useable W	44"
# dividers	21	Useable D (comp)	5.5", 5", 5", 5.5"
# separators	6	Useable W (comp)	7", 6", 6", 6", 6", 7"
# comps	28		



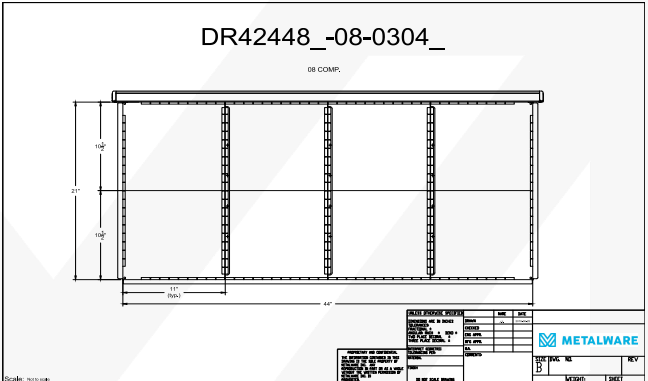
Code	DR32448_-44-1033		
Nominal H	3"	Useable H	2"
Nominal D	24"	Useable D	21"
Nominal W	48"	Useable W	44"
# dividers	33	Useable D (comp)	5.5", 5", 5", 5.5"
# separators	10	Useable W (comp)	4"
# comps	44		

Note : Images show evenly distributed drawer dividers. Dividers can be dropped into place every inch. Additional dividers are available based on compartment width and drawer height. Drawer separators are screwed into place during assembly but are adjustable every inch.

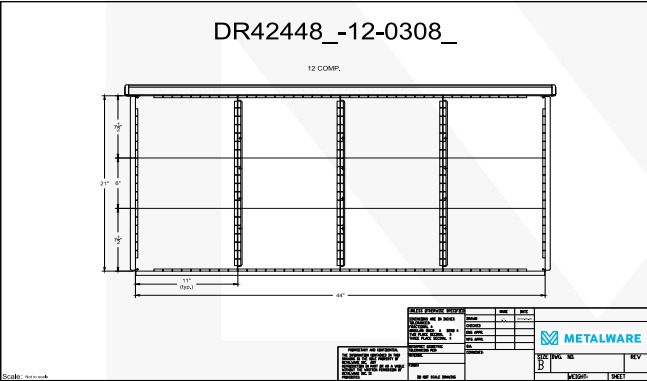
4"



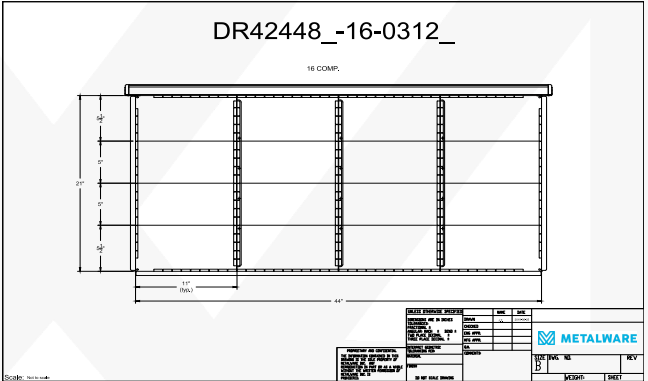
Code	DR42448_-00-0000_	DR42448_-01-0000_ Empty with a mat (not shown)	
Nominal H	4"	Useable H	3"
Nominal D	21"	Useable D	21"
Nominal W	48"	Useable W	44"
# dividers	0	Useable D (comp)	21"
# separators	0	Useable W (comp)	44"
# comps	0		



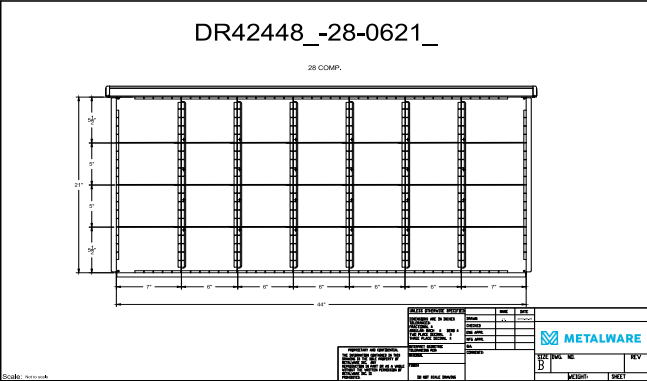
Code	DR42448_-08-0304_		
Nominal H	4"	Useable H	3"
Nominal D	24"	Useable D	21"
Nominal W	48"	Useable W	44"
# dividers	4	Useable D (comp)	10.5"
# separators	3	Useable W (comp)	11"
# comps	8		



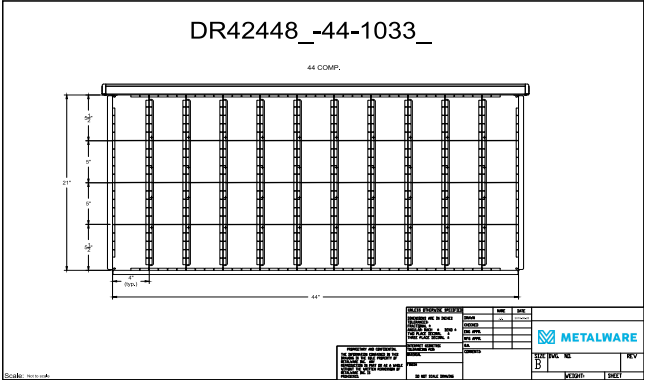
Code	DR42448_-12-0308_		
Nominal H	4"	Useable H	3"
Nominal D	24"	Useable D	21"
Nominal W	48"	Useable W	44"
# dividers	8	Useable D (comp)	7.5", 6", 7.5"
# separators	3	Useable W (comp)	11"
# comps	12		



Code	DR42448_-16-0312		
Nominal H	4"	Useable H	3"
Nominal D	24"	Useable D	21"
Nominal W	48"	Useable W	44"
# dividers	12	Useable D (comp)	5.5", 5", 5", 5.5"
# separators	3	Useable W (comp)	11"
# comps	16		



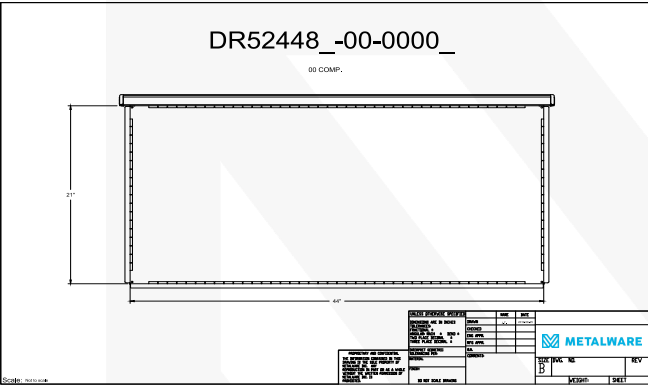
Code	DR42448_-28-0621_		
Nominal H	4"	Useable H	3"
Nominal D	24"	Useable D	21"
Nominal W	48"	Useable W	44"
# dividers	21	Useable D (comp)	5.5", 5", 5", 5.5"
# separators	6	Useable W (comp)	7", 6", 6", 6", 6", 6", 7"
# comps	28		



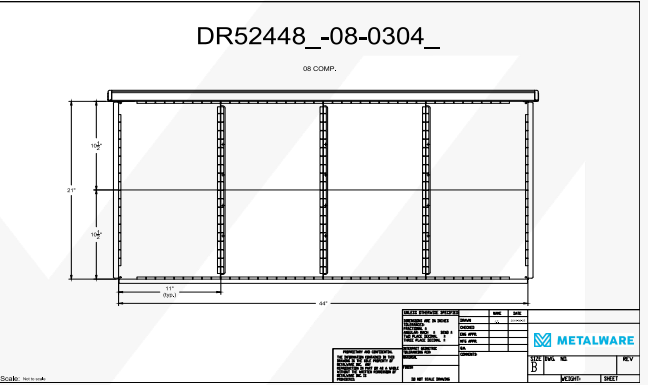
Code	DR42448_-44-1033		
Nominal H	4"	Useable H	3"
Nominal D	24"	Useable D	21"
Nominal W	48"	Useable W	44"
# dividers	33	Useable D (comp)	5.5", 5", 5", 5.5"
# separators	10	Useable W (comp)	4"
# comps	44		

Note : Images show evenly distributed drawer dividers. Dividers can be dropped into place every inch. Additional dividers are available based on compartment width and drawer height. Drawer separators are screwed into place during assembly but are adjustable every inch.

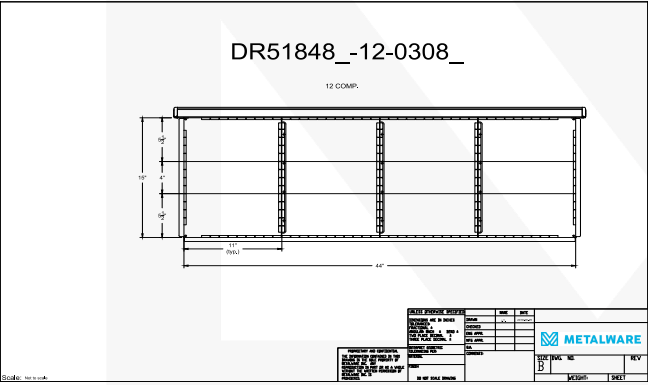
5"



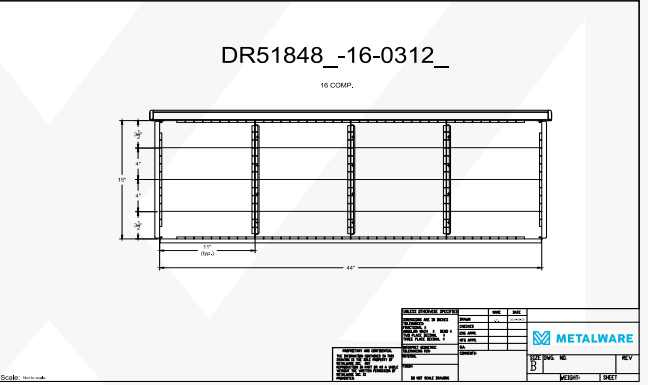
Code	DR52448_-00-0000_	DR52448_-01-0000_	Empty with a mat (not shown)
Nominal H	5"	Useable H	4"
Nominal D	24"	Useable D	21"
Nominal W	48"	Useable W	44"
# dividers	0	Useable D (comp)	21"
# separators	0	Useable W (comp)	44"
# comps	0		



Code	DR52448_-08-0304		
Nominal H	5"	Useable H	4"
Nominal D	24"	Useable D	21"
Nominal W	48"	Useable W	44"
# dividers	4	Useable D (comp)	7.5"
# separators	3	Useable W (comp)	11"
# comps	8		



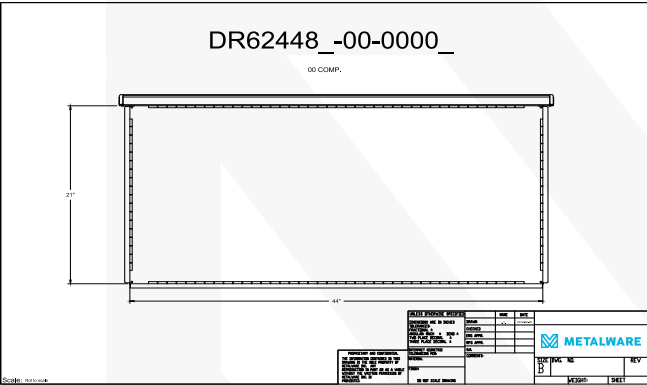
Code	DR51848_-12-0308_		
Nominal H	5"	Useable H	4"
Nominal D	18"	Useable D	15"
Nominal W	48"	Useable W	44"
# dividers	8	Useable D (comp)	5.5", 4", 5.5"
# separators	3	Useable W (comp)	11"
# comps	12		



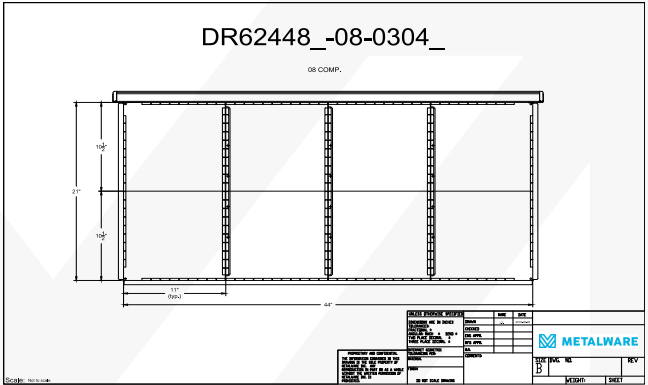
Code	DR51848_-16-0312		
Nominal H	5"	Useable H	4"
Nominal D	18"	Useable D	15"
Nominal W	48"	Useable W	44"
# dividers	12	Useable D (comp)	3.5", 4", 4", 3.5"
# separators	3	Useable W (comp)	11"
# comps	16		

Note : Images show evenly distributed drawer dividers. Dividers can be dropped into place every inch. Additional dividers are available based on compartment width and drawer height. Drawer separators are screwed into place during assembly but are adjustable every inch.

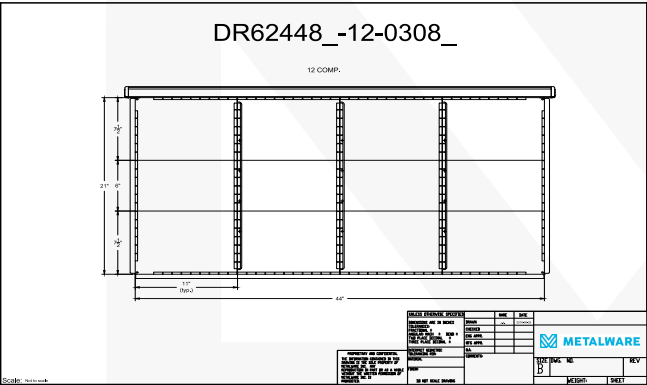
6"



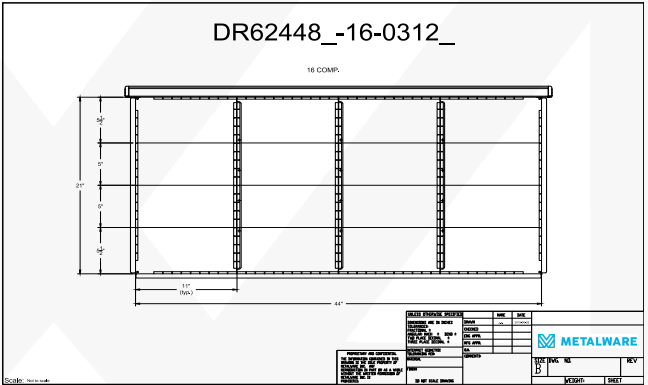
Code	DR62448_-00-0000_	DR62448_-01-0000_ Empty with a mat (not shown)	
Nominal H	6"	Useable H	5"
Nominal D	24"	Useable D	21"
Nominal W	48"	Useable W	44"
# dividers	0	Useable D (comp)	21"
# separators	0	Useable W (comp)	44"
# comps	0		



Code	DR62448_-08-0304_		
Nominal H	6"	Useable H	5"
Nominal D	24"	Useable D	21"
Nominal W	48"	Useable W	44"
# dividers	4	Useable D (comp)	10.5"
# separators	3	Useable W (comp)	11"
# comps	8		



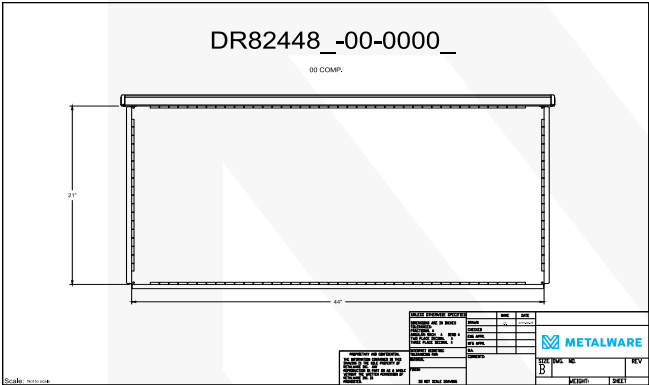
Code	D62448_-12-0308_		
Nominal H	6"	Useable H	5"
Nominal D	24"	Useable D	21"
Nominal W	48"	Useable W	44"
# dividers	8	Useable D (comp)	7.5", 6", 7.5"
# separators	3	Useable W (comp)	11"
# comps	12		



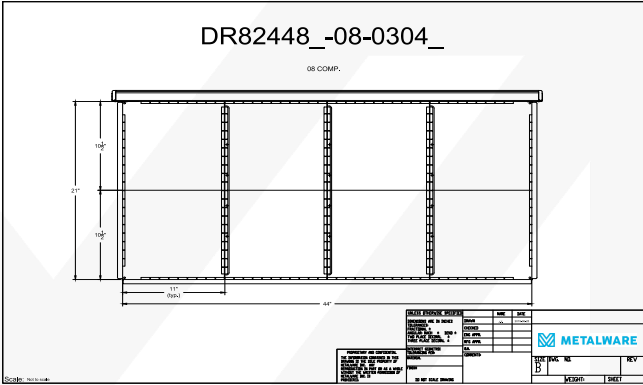
Code	DR62448_-16-0312_		
Nominal H	6"	Useable H	5"
Nominal D	24"	Useable D	21"
Nominal W	48"	Useable W	44"
# dividers	12	Useable D (comp)	5.5", 5", 5", 5.5"
# separators	3	Useable W (comp)	11"
# comps	16		

Note : Images show evenly distributed drawer dividers. Dividers can be dropped into place every inch. Additional dividers are available based on compartment width and drawer height. Drawer separators are screwed into place during assembly but are adjustable every inch.

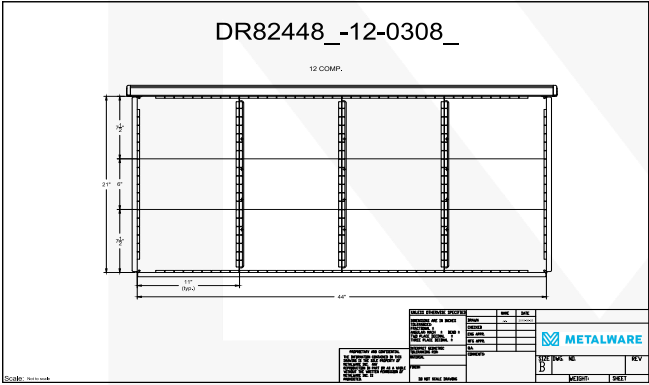
8"



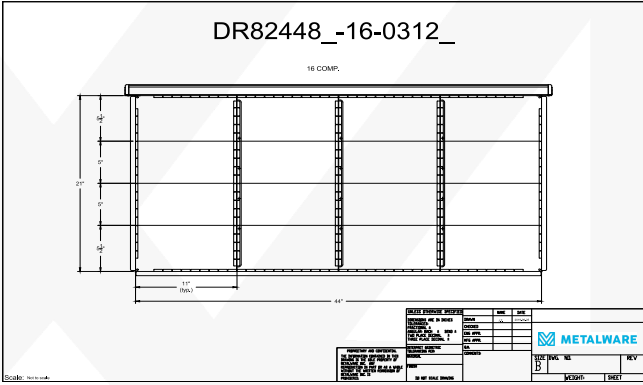
Code	DR82448_-00-0000_	DR82448_-01-0000_ Empty with a mat (not shown)	
Nominal H	8"	Useable H	7"
Nominal D	24"	Useable D	21"
Nominal W	48"	Useable W	44"
# dividers	0	Useable D (comp)	21"
# separators	0	Useable W (comp)	44"
# comps	0		



Code	DR82448_-08-0304_		
Nominal H	8"	Useable H	7"
Nominal D	24"	Useable D	21"
Nominal W	48"	Useable W	44"
# dividers	4	Useable D (comp)	10.5"
# separators	3	Useable W (comp)	11"
# comps	8		



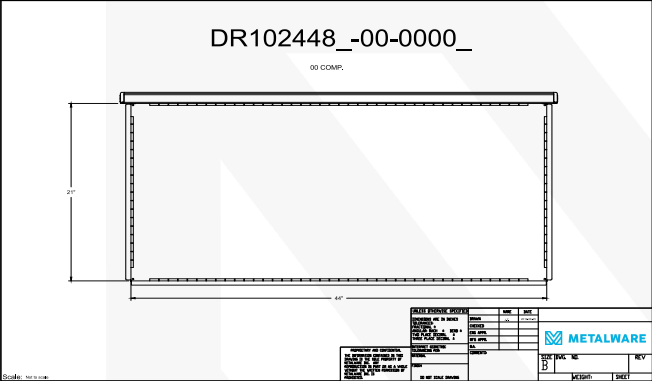
Code	D82448_-12-0308_		
Nominal H	8"	Useable H	7"
Nominal D	24"	Useable D	21"
Nominal W	48"	Useable W	44"
# dividers	8	Useable D (comp)	7.5", 6", 7.5"
# separators	3	Useable W (comp)	11"
# comps	12		



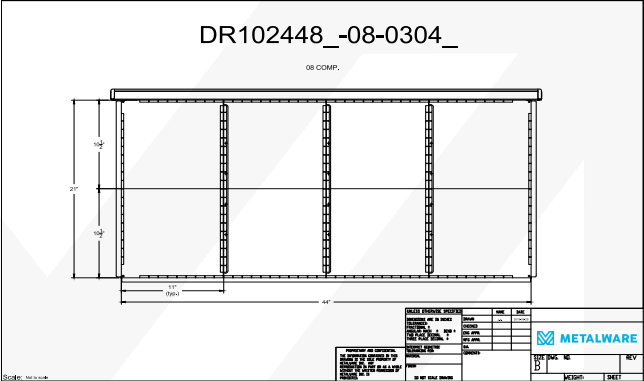
Code	DR82448_-16-0312		
Nominal H	8"	Useable H	7"
Nominal D	24"	Useable D	21"
Nominal W	48"	Useable W	44"
# dividers	12	Useable D (comp)	5.5", 5", 5", 5.5"
# separators	3	Useable W (comp)	11"
# comps	16		

Note : Images show evenly distributed drawer dividers. Dividers can be dropped into place every inch. Additional dividers are available based on compartment width and drawer height. Drawer separators are screwed into place during assembly but are adjustable every inch.

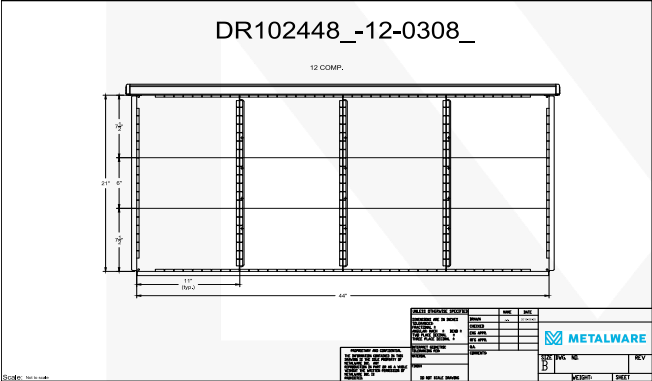
10"



Code	DR102448_-00-0000_	DR102448_-01-0000_ Empty with a mat (not shown)	
Nominal H	10"	Useable H	9"
Nominal D	24"	Useable D	21"
Nominal W	48"	Useable W	44"
# dividers	0	Useable D (comp)	21"
# separators	0	Useable W (comp)	44"
# comps	0		



Code	DR102448_-08-0304		
Nominal H	10"	Useable H	9"
Nominal D	24"	Useable D	21"
Nominal W	48"	Useable W	44"
# dividers	4	Useable D (comp)	10.5"
# separators	3	Useable W (comp)	11"
# comps	8		

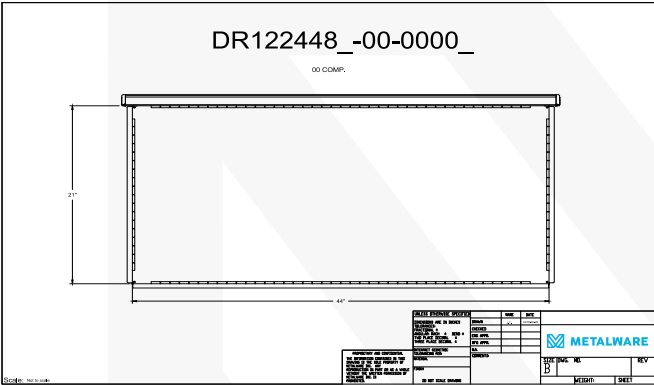


Code	D102448_-12-0308_		
Nominal H	10"	Useable H	9"
Nominal D	24"	Useable D	21"
Nominal W	48"	Useable W	44"
# dividers	8	Useable D (comp)	7.5", 6", 7.5"
# separators	3	Useable W (comp)	11"
# comps	12		

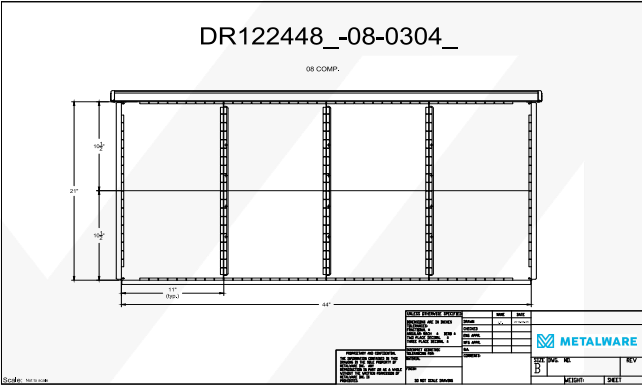
Note : Images show evenly distributed drawer dividers. Dividers can be dropped into place every inch. Additional dividers are available based on compartment width and drawer height. Drawer separators are screwed into place during assembly but are adjustable every inch.



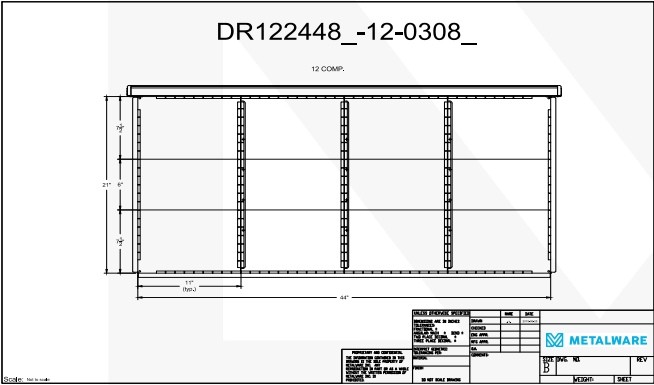
12"



Code	DR122448_-00-0000_	DR122448_-01-0000_ Empty with a mat (not shown)	
Nominal H	12"	Useable H	11"
Nominal D	24"	Useable D	21"
Nominal W	48"	Useable W	44"
# dividers	0	Useable D (comp)	21"
# separators	0	Useable W (comp)	44"
# comps	0		



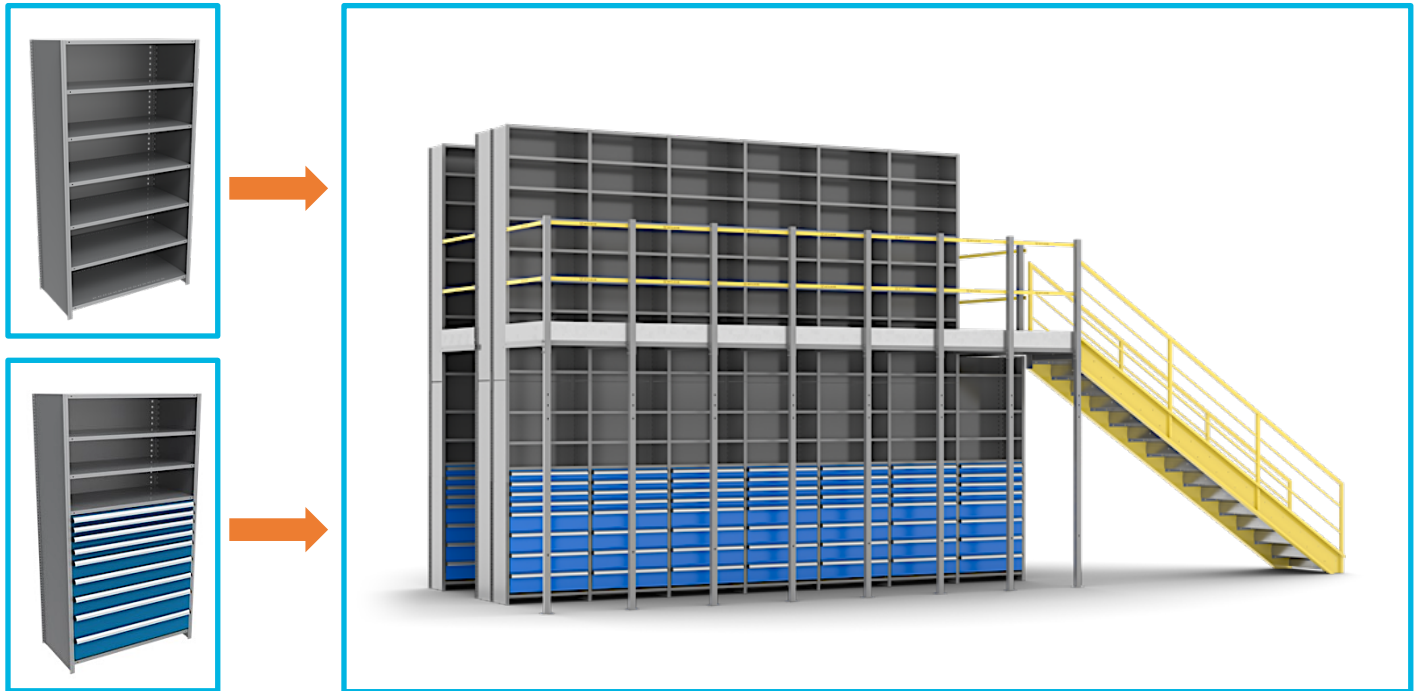
Code	DR122448_-08-0304		
Nominal H	12"	Useable H	11"
Nominal D	24"	Useable D	21"
Nominal W	48"	Useable W	44"
# dividers	4	Useable D (comp)	10.5"
# separators	3	Useable W (comp)	11"
# comps	8		



Code	D122448_-12-0308_		
Nominal H	12"	Useable H	11"
Nominal D	24"	Useable D	21"
Nominal W	48"	Useable W	44"
# dividers	8	Useable D (comp)	7.5", 6", 7.5"
# separators	3	Useable W (comp)	11"
# comps	12		

Note : Images show evenly distributed drawer dividers. Dividers can be dropped into place every inch. Additional dividers are available based on compartment width and drawer height. Drawer separators are screwed into place during assembly but are adjustable every inch.

/ Optimize Your Space and Grow Vertically With a Multi-Level Shelving Solution



Contact METALWARE assistance for your multi-level / custom proposals.



METALWARE

5735 Place Turcot, Montréal, QC H4C 1V9 | info@metalware.ca | 1-833-937-9533 | metalwareshelving.com